

Product datasheet for **TA344633**

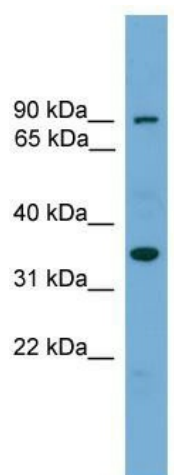
NDNL2 (NSMCE3) Rabbit Polyclonal Antibody

Product data:

Product Type:	Primary Antibodies
Applications:	WB
Recommended Dilution:	WB
Reactivity:	Human
Host:	Rabbit
Isotype:	IgG
Clonality:	Polyclonal
Immunogen:	The immunogen for anti-NDNL2 antibody: synthetic peptide directed towards the middle region of human NDNL2. Synthetic peptide located within the following region: IFGDPKKLITEDFVRQRYLEYRRIPHTDPVDYEFQWGPRTNLETSMKMKVL
Formulation:	Liquid. Purified antibody supplied in 1x PBS buffer with 0.09% (w/v) sodium azide and 2% sucrose.
Purification:	Affinity Purified
Conjugation:	Unconjugated
Storage:	Store at -20°C as received.
Stability:	Stable for 12 months from date of receipt.
Predicted Protein Size:	34 kDa
Gene Name:	NSE3 homolog, SMC5-SMC6 complex component
Database Link:	NP_619649 Entrez Gene 56160 Human Q96MG7
Background:	This intronless gene encodes a member of the MAGE superfamily. The encoded protein is 76% identical to the mouse mage-g1 protein.
Synonyms:	HCA4; MAGEG1; MAGEL3; NSE3; NSMCE3
Note:	Immunogen Sequence Homology: Pig: 100%; Rat: 100%; Horse: 100%; Human: 100%; Mouse: 100%; Rabbit: 100%; Guinea pig: 100%; Bovine: 93%


[View online »](#)

Product images:



WB Suggested Anti-NDNL2 Antibody Titration:
0.2-1 ug/ml; Positive Control: Human brain