

Product datasheet for **TA344630**

Kallikrein 7 (KLK7) Rabbit Polyclonal Antibody

Product data:

Product Type:	Primary Antibodies
Applications:	WB
Recommended Dilution:	WB
Reactivity:	Human
Host:	Rabbit
Isotype:	IgG
Clonality:	Polyclonal
Immunogen:	The immunogen for Anti-KLK7 antibody is: synthetic peptide directed towards the middle region of Human KLK7. Synthetic peptide located within the following region: IKASKSFRHPGYSTQTHVNDLMLVKLNSQARLSSMVKKVRLPSRCEPPGT
Formulation:	Liquid. Purified antibody supplied in 1x PBS buffer with 0.09% (w/v) sodium azide and 2% sucrose. <i>Note that this product is shipped as lyophilized powder to China customers.</i>
Purification:	Affinity Purified
Conjugation:	Unconjugated
Storage:	Store at -20°C as received.
Stability:	Stable for 12 months from date of receipt.
Predicted Protein Size:	19 kDa
Gene Name:	kallikrein related peptidase 7
Database Link:	NP_005037 Entrez Gene 5650 Human P49862



[View online »](#)

Background:

This gene encodes a member of the kallikrein subfamily of serine proteases. These enzymes have diverse physiological functions and many kallikrein genes are biomarkers for cancer. The encoded protein has chymotrypsin-like activity and plays a role in the proteolysis of intercellular cohesive structures that precedes desquamation, the shedding of the outermost layer of the epidermis. The encoded protein may play a role in cancer invasion and metastasis, and increased expression of this gene is associated with unfavorable prognosis and progression of several types of cancer. Polymorphisms in this gene may play a role in the development of atopic dermatitis.

Synonyms:

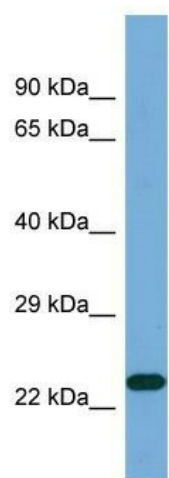
hK7; PRSS6; SCCE

Note:

Immunogen Sequence Homology: Dog: 100%; Pig: 100%; Human: 100%; Bovine: 100%; Rat: 92%; Mouse: 92%; Guinea pig: 92%; Rabbit: 86%

Protein Families:

Druggable Genome, Secreted Protein

Product images:

Host: Rabbit; Target Name: KLK7; Sample Tissue: Fetal Brain lysates; Antibody Dilution: 1.0 ug/ml