

## Product datasheet for **TA344629**

### ASB3 Rabbit Polyclonal Antibody

#### Product data:

Product Type:	Primary Antibodies
Applications:	WB
Recommended Dilution:	WB
Reactivity:	Human
Host:	Rabbit
Isotype:	IgG
Clonality:	Polyclonal
Immunogen:	The immunogen for anti-ASB3 antibody: synthetic peptide directed towards the middle region of human ASB3. Synthetic peptide located within the following region: LEIRSSSLKSERLRSDSYISQLPLPRSLHNYLLYEDVLRMYEVP ELAAIQD
Formulation:	Liquid. Purified antibody supplied in 1x PBS buffer with 0.09% (w/v) sodium azide and 2% sucrose. <i>Note that this product is shipped as lyophilized powder to China customers.</i>
Purification:	Affinity Purified
Conjugation:	Unconjugated
Storage:	Store at -20°C as received.
Stability:	Stable for 12 months from date of receipt.
Predicted Protein Size:	49 kDa
Gene Name:	ankyrin repeat and SOCS box containing 3
Database Link:	<a href="#">NP_665862</a> <a href="#">Entrez Gene 51130 Human</a> <a href="#">Q9Y575</a>
Background:	The protein encoded by this gene is a member of the ankyrin repeat and SOCS box-containing (ASB) family of proteins. They contain ankyrin repeat sequence and SOCS box domain. The SOCS box serves to couple suppressor of cytokine signalling (SOCS) proteins and their binding partners with the elongin B and C complex, possibly targeting them for degradation. Multiple alternatively spliced transcript variants have been described for this gene but some of the full length sequences are not known.



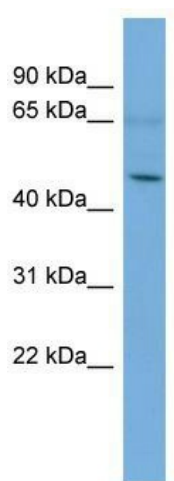
[View online »](#)

Synonyms: ASB-3

Note: Immunogen Sequence Homology: Human: 100%; Dog: 86%; Pig: 86%; Rat: 86%; Horse: 86%; Guinea pig: 86%; Bovine: 79%

Protein Families: Druggable Genome

### Product images:



WB Suggested Anti-ASB3 Antibody Titration: 0.2-1 ug/ml; ELISA Titer: 1:312500; Positive Control: A549 cell lysate