

## Product datasheet for **TA344627**

### PSMA3 Rabbit Polyclonal Antibody

#### Product data:

|                         |  |
|-------------------------|--|
| Product Type:           | Primary Antibodies   |
| Applications:           | WB   |
| Recommended Dilution:   | WB   |
| Reactivity:             | Human  |
| Host:                   | Rabbit   |
| Isotype:                | IgG  |
| Clonality:              | Polyclonal   |
| Immunogen:              | The immunogen for anti-PSMA3 antibody: synthetic peptide directed towards the middle region of human PSMA3. Synthetic peptide located within the following region:<br>VKDKAFELELSWVGELTNGRHEIVPKDIREEAKEYAKESLKEEDESDDDN |
| Formulation:            | Liquid. Purified antibody supplied in 1x PBS buffer with 0.09% (w/v) sodium azide and 2% sucrose.<br><i>Note that this product is shipped as lyophilized powder to China customers.</i>                                  |
| Purification:           | Affinity Purified  |
| Conjugation:            | Unconjugated   |
| Storage:                | Store at -20°C as received.  |
| Stability:              | Stable for 12 months from date of receipt.   |
| Predicted Protein Size: | 28 kDa   |
| Gene Name:              | proteasome subunit alpha 3   |
| Database Link:          | <a href="#">NP_687033</a><br><a href="#">Entrez Gene 5684 Human</a><br><a href="#">P25788</a>  |



[View online »](#)

**Background:**

The proteasome is a multicatalytic proteinase complex with a highly ordered ring-shaped 20S core structure. The core structure is composed of 4 rings of 28 non-identical subunits; 2 rings are composed of 7 alpha subunits and 2 rings are composed of 7 beta subunits. Proteasomes are distributed throughout eukaryotic cells at a high concentration and cleave peptides in an ATP/ubiquitin-dependent process in a non-lysosomal pathway. An essential function of a modified proteasome, the immunoproteasome, is the processing of class I MHC peptides. PSMA3 is a member of the peptidase T1A family, that is a 20S core alpha subunit. The proteasome is a multicatalytic proteinase complex with a highly ordered ring-shaped 20S core structure. The core structure is composed of 4 rings of 28 non-identical subunits; 2 rings are composed of 7 alpha subunits and 2 rings are composed of 7 beta subunits. Proteasomes are distributed throughout eukaryotic cells at a high concentration and cleave peptides in an ATP/ubiquitin-dependent process in a non-lysosomal pathway. An essential function of a modified proteasome, the immunoproteasome, is the processing of class I MHC peptides. This gene encodes a member of the peptidase T1A family, that is a 20S core alpha subunit. Two alternative transcripts encoding different isoforms have been identified.

**Synonyms:**

HC8; PSC3

**Note:**

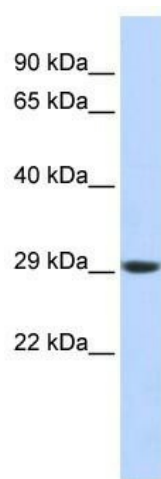
Immunogen Sequence Homology: Dog: 100%; Pig: 100%; Rat: 100%; Horse: 100%; Human: 100%; Mouse: 100%; Bovine: 100%; Rabbit: 100%; Guinea pig: 100%; Yeast: 90%; Zebrafish: 79%

**Protein Families:**

Druggable Genome, Protease, Stem cell - Pluripotency

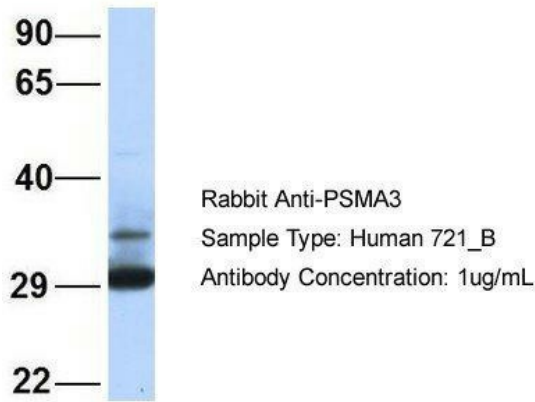
**Protein Pathways:**

Proteasome

**Product images:**

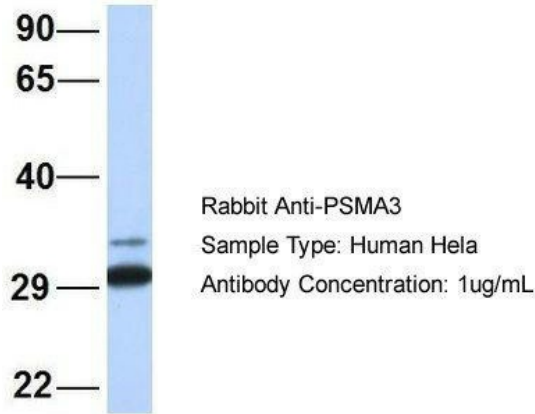
WB Suggested Anti-PSMA3 Antibody Titration:  
0.2-1 ug/ml; ELISA Titer: 1:12500; Positive Control:  
Human brain

## PSMA3



Host: Rabbit; Target Name: PSMA3; Sample Tissue: Human 721\_B; Antibody Dilution: 1.0 ug/ml; PSMA3 is supported by BioGPS gene expression data to be expressed in 721\_B

## PSMA3



Host: Rabbit; Target Name: PSMA3; Sample Tissue: Human HeLa; Antibody Dilution: 1.0 ug/ml; PSMA3 is supported by BioGPS gene expression data to be expressed in HeLa