

## Product datasheet for TA344621

### CYP20A1 Rabbit Polyclonal Antibody

#### Product data:

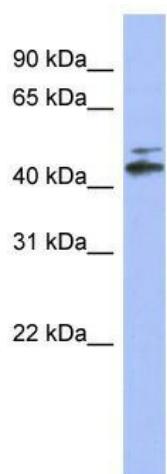
Product Type:	Primary Antibodies
Applications:	WB
Recommended Dilution:	WB
Reactivity:	Human
Host:	Rabbit
Isotype:	IgG
Clonality:	Polyclonal
Immunogen:	The immunogen for anti-CYP20A1 antibody: synthetic peptide directed towards the N terminal of human CYP20A1. Synthetic peptide located within the following region: ITPTEEKDGNLPDIVNSGSLHEFLVNLHERYGPVVSFWFGRRLVSLGTV
Formulation:	Liquid. Purified antibody supplied in 1x PBS buffer with 0.09% (w/v) sodium azide and 2% sucrose. <i>Note that this product is shipped as lyophilized powder to China customers.</i>
Purification:	Affinity Purified
Conjugation:	Unconjugated
Storage:	Store at -20°C as received.
Stability:	Stable for 12 months from date of receipt.
Predicted Protein Size:	52 kDa
Gene Name:	cytochrome P450 family 20 subfamily A member 1
Database Link:	<a href="#">NP_803882</a> <a href="#">Entrez Gene 57404 Human</a> <a href="#">Q6UW02</a>
Background:	This gene encodes a member of the cytochrome P450 superfamily of enzymes. The cytochrome P450 proteins are monooxygenases that catalyze many reactions involved in drug metabolism and synthesis of cholesterol, steroids and other lipids. This protein lacks
Synonyms:	CYP-M
Note:	Immunogen Sequence Homology: Dog: 100%; Pig: 100%; Rat: 100%; Goat: 100%; Horse: 100%; Human: 100%; Mouse: 100%; Bovine: 100%; Rabbit: 100%; Guinea pig: 100%; Zebrafish: 93%



[View online »](#)

Protein Families: Druggable Genome, P450, Transmembrane

### Product images:



WB Suggested Anti-CYP20A1 Antibody Titration:  
0.2-1 ug/ml; ELISA Titer: 1:312500; Positive  
Control: Human Lung