

Product datasheet for **TA344620**

ASAH1 Rabbit Polyclonal Antibody

Product data:

Product Type:	Primary Antibodies
Applications:	WB
Recommended Dilution:	WB
Reactivity:	Human
Host:	Rabbit
Isotype:	IgG
Clonality:	Polyclonal
Immunogen:	The immunogen for anti-ASAH1 antibody: synthetic peptide directed towards the N terminal of human ASAH1. Synthetic peptide located within the following region: MPGRSCVALVLLAAAVSCAVAQHAPPWTEDCRKSTYPPSGPTYRGAVPWY
Formulation:	Liquid. Purified antibody supplied in 1x PBS buffer with 0.09% (w/v) sodium azide and 2% sucrose. <i>Note that this product is shipped as lyophilized powder to China customers.</i>
Purification:	Affinity Purified
Conjugation:	Unconjugated
Storage:	Store at -20°C as received.
Stability:	Stable for 12 months from date of receipt.
Predicted Protein Size:	44 kDa
Gene Name:	N-acylsphingosine amidohydrolase (acid ceramidase) 1
Database Link:	NP_808592 Entrez Gene 427 Human Q13510
Background:	This gene encodes a heterodimeric protein consisting of a nonglycosylated alpha subunit and a glycosylated beta subunit that is cleaved to the mature enzyme posttranslationally. The encoded protein catalyzes the synthesis and degradation of ceramide into
Synonyms:	AC; ACDase; ASAH; PHP; PHP32; SMAPME
Note:	Immunogen Sequence Homology: Dog: 100%; Pig: 100%; Rat: 100%; Horse: 100%; Human: 100%; Mouse: 100%; Bovine: 100%; Guinea pig: 100%; Rabbit: 92%

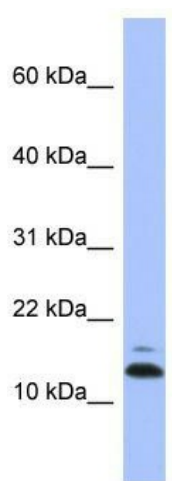


[View online »](#)

Protein Families: Druggable Genome

Protein Pathways: Lysosome, Metabolic pathways, Sphingolipid metabolism

Product images:



WB Suggested Anti-ASAH1 Antibody Titration: 0.2-1 ug/ml; ELISA Titer: 1:1562500; Positive Control: Human Lung