

Product datasheet for **TA344619**

ASAH1 Rabbit Polyclonal Antibody

Product data:

| | |
|-------------------------|----------------------------------------------------------------------------------------------------------------------------------------------------------------------------------------------------------------------------------------------------------------|
| Product Type: | Primary Antibodies |
| Applications: | WB |
| Recommended Dilution: | WB |
| Reactivity: | Human, Rat |
| Host: | Rabbit |
| Isotype: | IgG |
| Clonality: | Polyclonal |
| Immunogen: | The immunogen for anti-ASAH1 antibody: synthetic peptide directed towards the middle region of human ASAH1. Synthetic peptide located within the following region: QSGEGCVITDRKESLDVYELDAKQGRWYVVQTNYDRWKHPFLDDRTP |
| Formulation: | Liquid. Purified antibody supplied in 1x PBS buffer with 0.09% (w/v) sodium azide and 2% sucrose. <i>Note that this product is shipped as lyophilized powder to China customers.</i> |
| Purification: | Affinity Purified |
| Conjugation: | Unconjugated |
| Storage: | Store at -20°C as received. |
| Stability: | Stable for 12 months from date of receipt. |
| Predicted Protein Size: | 14 kDa |
| Gene Name: | N-acylsphingosine amidohydrolase (acid ceramidase) 1 |
| Database Link: | NP_808592 Entrez Gene 84431 Rat Entrez Gene 427 Human Q13510 |
| Background: | This gene encodes a heterodimeric protein consisting of a nonglycosylated alpha subunit and a glycosylated beta subunit that is cleaved to the mature enzyme posttranslationally. The encoded protein catalyzes the synthesis and degradation of ceramide into |
| Synonyms: | AC; ACDase; ASAH; PHP; PHP32; SMAPME |
| Note: | Immunogen Sequence Homology: Pig: 100%; Human: 100%; Rat: 92%; Horse: 92%; Mouse: 92%; Guinea pig: 92%; Dog: 85%; Bovine: 85% |

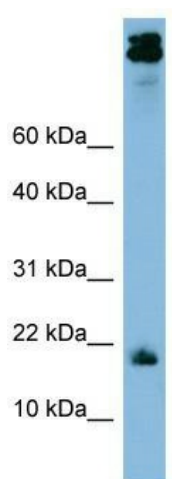


[View online »](#)

Protein Families: Druggable Genome

Protein Pathways: Lysosome, Metabolic pathways, Sphingolipid metabolism

Product images:



WB Suggested Anti-ASAH1 Antibody Titration: 0.2-1 ug/ml; ELISA Titer: 1:312500; Positive Control: THP-1 cell lysate