

## Product datasheet for **TA344617**

### PHD4 (P4HTM) Rabbit Polyclonal Antibody

#### Product data:

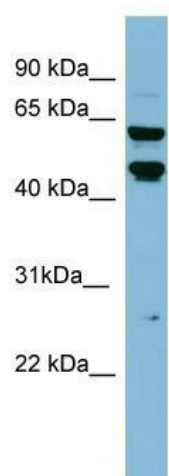
Product Type:	Primary Antibodies
Applications:	WB
Recommended Dilution:	WB
Reactivity:	Human
Host:	Rabbit
Isotype:	IgG
Clonality:	Polyclonal
Immunogen:	The immunogen for anti-PH-4 antibody: synthetic peptide directed towards the middle region of human PH-4. Synthetic peptide located within the following region: GHYHAHVDSGPVYPETICSHTKLVANESVPFETSCRYMTVLFYLNNTGG
Formulation:	Liquid. Purified antibody supplied in 1x PBS buffer with 0.09% (w/v) sodium azide and 2% sucrose. <i>Note that this product is shipped as lyophilized powder to China customers.</i>
Purification:	Affinity Purified
Conjugation:	Unconjugated
Storage:	Store at -20°C as received.
Stability:	Stable for 12 months from date of receipt.
Predicted Protein Size:	57 kDa
Gene Name:	prolyl 4-hydroxylase, transmembrane
Database Link:	<a href="#">NP_808808</a> <a href="#">Entrez Gene 54681 Human</a> <a href="#">Q9NXG6</a>
Background:	The product of this gene belongs to the family of prolyl 4-hydroxylases. This protein is a prolyl hydroxylase that may be involved in the degradation of hypoxia-inducible transcription factors under normoxia. It plays a role in adaptation to hypoxia and m
Synonyms:	EGLN4; HIFPH4; P4H-TM; PH-4; PH4; PHD4
Note:	Immunogen Sequence Homology: Dog: 100%; Pig: 100%; Rat: 100%; Horse: 100%; Human: 100%; Mouse: 100%; Bovine: 100%; Rabbit: 100%; Guinea pig: 100%; Zebrafish: 93%



[View online »](#)

Protein Families: Druggable Genome, Transmembrane

### Product images:



WB Suggested Anti-PH-4 Antibody Titration: 0.2-1 ug/ml; ELISA Titer: 1:1562500; Positive Control: HT1080 cell lysate