

Product datasheet for **TA344616**

PPM1A Rabbit Polyclonal Antibody

Product data:

Product Type:	Primary Antibodies
Applications:	WB
Recommended Dilution:	WB
Reactivity:	Human
Host:	Rabbit
Isotype:	IgG
Clonality:	Polyclonal
Immunogen:	The immunogen for anti-PPM1A antibody: synthetic peptide directed towards the middle region of human PPM1A. Synthetic peptide located within the following region: EIDEHMRVMSEKKHGADRSSTAVGVLISPQHTYFINCGDSRGLLCRNRK
Formulation:	Liquid. Purified antibody supplied in 1x PBS buffer with 0.09% (w/v) sodium azide and 2% sucrose. <i>Note that this product is shipped as lyophilized powder to China customers.</i>
Purification:	Affinity Purified
Conjugation:	Unconjugated
Storage:	Store at -20°C as received.
Stability:	Stable for 12 months from date of receipt.
Predicted Protein Size:	36 kDa
Gene Name:	protein phosphatase, Mg ²⁺ /Mn ²⁺ dependent 1A
Database Link:	NP_808820 Entrez Gene 5494 Human P35813
Background:	The protein encoded by this gene is a member of the PP2C family of Ser/Thr protein phosphatases. PP2C family members are known to be negative regulators of cell stress response pathways. This phosphatase dephosphorylates, and negatively regulates the acti
Synonyms:	PP2C-ALPHA; PP2CA; PP2Calpha
Note:	Immunogen Sequence Homology: Dog: 100%; Pig: 100%; Rat: 100%; Horse: 100%; Human: 100%; Mouse: 100%; Bovine: 100%; Rabbit: 100%; Guinea pig: 100%; Zebrafish: 93%

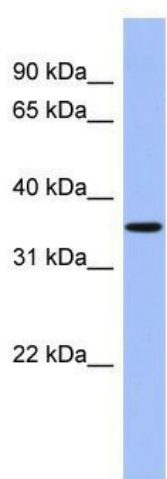


[View online »](#)

Protein Families: Druggable Genome, Phosphatase

Protein Pathways: MAPK signaling pathway

Product images:



WB Suggested Anti-PPM1A Antibody Titration:
0.2-1 ug/ml; ELISA Titer: 1:1562500; Positive
Control: Human heart