

Product datasheet for TA344612

EXOC1 Rabbit Polyclonal Antibody

Product data:

Product Type:	Primary Antibodies
Applications:	WB
Recommended Dilution:	WB
Reactivity:	Human
Host:	Rabbit
Isotype:	IgG
Clonality:	Polyclonal
Immunogen:	The immunogen for anti-EXOC1 antibody: synthetic peptide directed towards the N terminal of human EXOC1. Synthetic peptide located within the following region: NVSSQLLEESVPSGENQSVTGGDEEVVDEYQELNAREEQDIEIMMEGCEY
Formulation:	Liquid. Purified antibody supplied in 1x PBS buffer with 0.09% (w/v) sodium azide and 2% sucrose.
Purification:	Affinity Purified
Conjugation:	Unconjugated
Storage:	Store at -20°C as received.
Stability:	Stable for 12 months from date of receipt.
Predicted Protein Size:	100 kDa
Gene Name:	exocyst complex component 1
Database Link:	NP_060731 Entrez Gene 55763 Human Q9NV70
Background:	The protein encoded by this gene is a component of the exocyst complex, a multiple protein complex essential for targeting exocytic vesicles to specific docking sites on the plasma membrane. Though best characterized in yeast, the component proteins and functions of the exocyst complex have been demonstrated to be highly conserved in higher eukaryotes. At least eight components of the exocyst complex, including this protein, are found to interact with the actin cytoskeletal remodeling and vesicle transport machinery. Alternatively spliced transcript variants encoding distinct isoforms have been described.

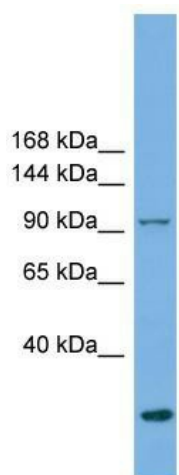


[View online »](#)

Synonyms: BM-102; SEC3; SEC3L1; SEC3P

Note: Immunogen Sequence Homology: Dog: 100%; Pig: 100%; Horse: 100%; Human: 100%; Bovine: 100%; Rabbit: 100%; Guinea pig: 100%; Rat: 93%; Mouse: 93%; Zebrafish: 85%

Product images:



WB Suggested Anti-EXOC1 Antibody Titration: 0.2-1 ug/ml; ELISA Titer: 1:1562500; Positive Control: COLO205 cell lysate EXOC1 is supported by BioGPS gene expression data to be expressed in COLO205