

Product datasheet for **TA344609**

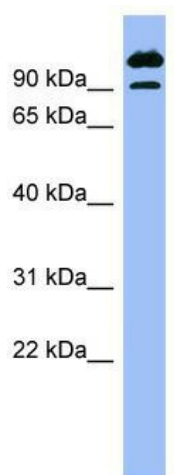
SCY1 like 3 (SCYL3) Rabbit Polyclonal Antibody

Product data:

Product Type:	Primary Antibodies
Applications:	WB
Recommended Dilution:	WB
Reactivity:	Human
Host:	Rabbit
Isotype:	IgG
Clonality:	Polyclonal
Immunogen:	The immunogen for anti-SCYL3 antibody: synthetic peptide directed towards the N terminal of human SCYL3. Synthetic peptide located within the following region: MGSENSALKSYTLREPPFTLPSGLAVYPAVLQDGKFAVSVFYKRENEDKV
Formulation:	Liquid. Purified antibody supplied in 1x PBS buffer with 0.09% (w/v) sodium azide and 2% sucrose. <i>Note that this product is shipped as lyophilized powder to China customers.</i>
Purification:	Affinity Purified
Conjugation:	Unconjugated
Storage:	Store at -20°C as received.
Stability:	Stable for 12 months from date of receipt.
Predicted Protein Size:	83 kDa
Gene Name:	SCY1 like pseudokinase 3
Database Link:	NP_851607 Entrez Gene 57147 Human Q8IZE3
Background:	SCYL3 may play a role in regulating cell adhesion/migration complexes in migrating cells.
Synonyms:	PACE-1; PACE1
Note:	Immunogen Sequence Homology: Rat: 100%; Human: 100%; Mouse: 100%; Rabbit: 93%; Dog: 86%; Pig: 86%; Bovine: 86%; Guinea pig: 86%; Horse: 79%
Protein Families:	Druggable Genome, Protein Kinase



[View online »](#)

Product images:

WB Suggested Anti-SCYL3 Antibody Titration: 0.2-1 ug/ml; ELISA Titer: 1:1562500; Positive Control: COLO205 cell lysate SCYL3 is strongly supported by BioGPS gene expression data to be expressed in Human COLO205 cells