

Product datasheet for **TA344607**

OXR1 Rabbit Polyclonal Antibody

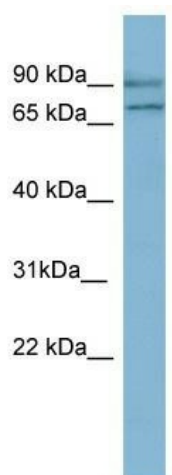
Product data:

Product Type:	Primary Antibodies
Applications:	WB
Recommended Dilution:	WB
Reactivity:	Human
Host:	Rabbit
Isotype:	IgG
Clonality:	Polyclonal
Immunogen:	The immunogen for anti-OXR1 antibody: synthetic peptide directed towards the N terminal of human OXR1. Synthetic peptide located within the following region: VESSPSLSPVSPLSPTSSEAEFDKTTNPDVHPTEATPSSTFTGIRPARVW
Formulation:	Liquid. Purified antibody supplied in 1x PBS buffer with 0.09% (w/v) sodium azide and 2% sucrose. <i>Note that this product is shipped as lyophilized powder to China customers.</i>
Purification:	Affinity Purified
Conjugation:	Unconjugated
Storage:	Store at -20°C as received.
Stability:	Stable for 12 months from date of receipt.
Predicted Protein Size:	85 kDa
Gene Name:	oxidation resistance 1
Database Link:	NP_851999 Entrez Gene 55074 Human Q8N573
Background:	OXR1 may be involved in protection from oxidative damage.
Synonyms:	Nbla00307; TLDC3
Note:	Immunogen Sequence Homology: Dog: 100%; Pig: 100%; Rat: 100%; Horse: 100%; Human: 100%; Mouse: 100%; Rabbit: 100%; Guinea pig: 100%; Bovine: 86%; Zebrafish: 79%



[View online »](#)

Product images:



WB Suggested Anti-OXR1 Antibody Titration: 0.2-1 ug/ml; ELISA Titer: 1:62500; Positive Control: NCI-H226 cell lysate