

## Product datasheet for **TA344606**

### Ancient ubiquitous protein 1 (AUP1) Rabbit Polyclonal Antibody

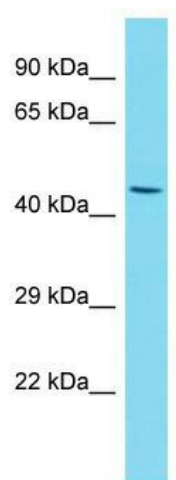
#### Product data:

Product Type:	Primary Antibodies
Applications:	WB
Recommended Dilution:	WB
Reactivity:	Mouse
Host:	Rabbit
Isotype:	IgG
Clonality:	Polyclonal
Immunogen:	The immunogen for Anti-Aup1 antibody is synthetic peptide directed towards the N-terminal region of Mouse Aup1. Synthetic peptide located within the following region: MPKDSAFPGAPAALRRWRRQRPRSPEAAAMEPPPAPGPERLFDShRLPSD
Formulation:	Liquid. Purified antibody supplied in 1x PBS buffer with 0.09% (w/v) sodium azide and 2% sucrose. <i>Note that this product is shipped as lyophilized powder to China customers.</i>
Purification:	Affinity Purified
Conjugation:	Unconjugated
Storage:	Store at -20°C as received.
Stability:	Stable for 12 months from date of receipt.
Predicted Protein Size:	49 kDa
Gene Name:	ancient ubiquitous protein 1
Database Link:	<a href="#">NP_853553</a> <a href="#">Entrez Gene 11993 Mouse Q9Y679</a>
Background:	The function of this protein remains unknown.
Synonyms:	ancient ubiquitous protein 1
Note:	Immunogen Sequence Homology: Rat: 100%; Human: 100%; Bovine: 93%; Pig: 87%; Guinea pig: 87%; Horse: 86%; Mouse: 86%; Rabbit: 86%; Dog: 81%
Protein Families:	Druggable Genome, Transmembrane



[View online »](#)

## Product images:



Host: Rabbit; Target Name: Aup1; Sample Tissue: Mouse Heart lysates; Antibody Dilution: 1.0 ug/ml