

Product datasheet for **TA344602**

PPP2R2C Rabbit Polyclonal Antibody

Product data:

Product Type:	Primary Antibodies
Applications:	WB
Recommended Dilution:	WB
Reactivity:	Mouse
Host:	Rabbit
Isotype:	IgG
Clonality:	Polyclonal
Immunogen:	The immunogen for anti-Ppp2r2c antibody: synthetic peptide corresponding to a region of Mouse. Synthetic peptide located within the following region: VTEADVISTVEFNHTGELLATGDKGGRVIFQREPESKNAPHSQGEYDVY
Formulation:	Liquid. Purified antibody supplied in 1x PBS buffer with 0.09% (w/v) sodium azide and 2% sucrose. <i>Note that this product is shipped as lyophilized powder to China customers.</i>
Purification:	Affinity Purified
Conjugation:	Unconjugated
Storage:	Store at -20°C as received.
Stability:	Stable for 12 months from date of receipt.
Predicted Protein Size:	49 kDa
Gene Name:	protein phosphatase 2 regulatory subunit Bgamma
Database Link:	NP_065149 Entrez Gene 5522 Human Q9Y2T4
Background:	The B regulatory subunit might modulate substrate selectivity and catalytic activity, and also might direct the localization of the catalytic enzyme to a particular subcellular compartment.
Synonyms:	B55-GAMMA; IMYPNO; IMYPNO1; PR52; PR55G
Note:	Immunogen Sequence Homology: Dog: 100%; Pig: 100%; Rat: 100%; Horse: 100%; Human: 100%; Mouse: 100%; Bovine: 100%; Rabbit: 100%; Guinea pig: 100%

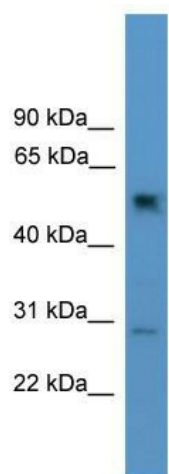


[View online »](#)

Protein Families: Druggable Genome, Phosphatase

Protein Pathways: Tight junction

Product images:



WB Suggested Anti-Ppp2r2c Antibody Titration:
0.2-1 ug/ml; ELISA Titer: 1:312500; Positive
Control: Mouse Lung