

## Product datasheet for **TA344600**

### PKM2 (PKM) Rabbit Polyclonal Antibody

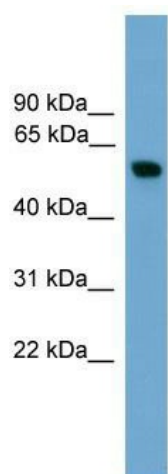
#### Product data:

Product Type:	Primary Antibodies
Applications:	WB
Recommended Dilution:	WB
Reactivity:	Human
Host:	Rabbit
Isotype:	IgG
Clonality:	Polyclonal
Immunogen:	The immunogen for anti-PKM2 antibody: synthetic peptide directed towards the middle region of human PKM2. Synthetic peptide located within the following region: HLQLFEELRRLAPITSDPTEATAVGAVEASFKCCSGAIVLTKSGRSAHQ
Formulation:	Liquid. Purified antibody supplied in 1x PBS buffer with 0.09% (w/v) sodium azide and 2% sucrose. <i>Note that this product is shipped as lyophilized powder to China customers.</i>
Purification:	Affinity Purified
Conjugation:	Unconjugated
Storage:	Store at -20°C as received.
Stability:	Stable for 12 months from date of receipt.
Predicted Protein Size:	58 kDa
Gene Name:	pyruvate kinase, muscle
Database Link:	<a href="#">NP_002645</a> <a href="#">Entrez Gene 5315 Human</a> <a href="#">P14618</a>

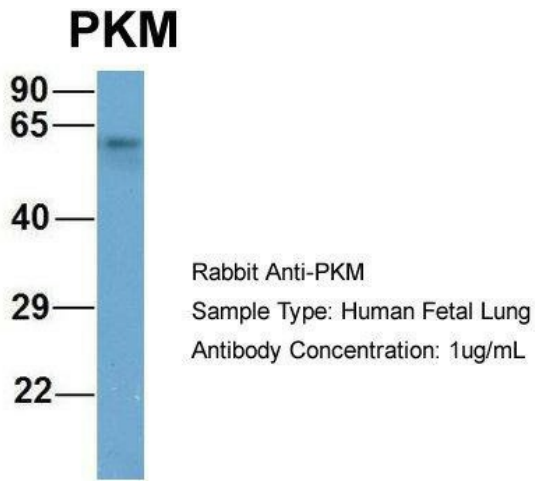


[View online »](#)

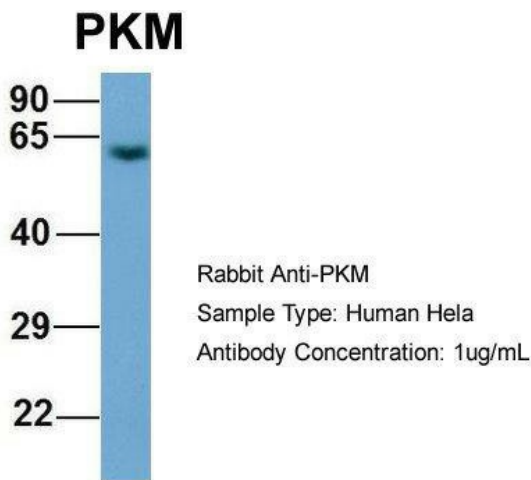
<b>Background:</b>	This gene encodes a protein involved in glycolysis. The encoded protein is a pyruvate kinase that catalyzes the transfer of a phosphoryl group from phosphoenolpyruvate to ADP, generating ATP and pyruvate. This protein has been shown to interact with thyroid hormone and may mediate cellular metabolic effects induced by thyroid hormones. This protein has been found to bind Opa protein, a bacterial outer membrane protein involved in gonococcal adherence to and invasion of human cells, suggesting a role of this protein in bacterial pathogenesis. Three alternatively spliced transcript variants encoding two distinct isoforms have been reported.
<b>Synonyms:</b>	CTHBP; HEL-S-30; OIP3; PK3; PKM2; TCB; THBP1
<b>Note:</b>	Immunogen Sequence Homology: Pig: 100%; Rat: 100%; Human: 100%; Mouse: 100%; Guinea pig: 100%; Dog: 93%; Horse: 93%; Bovine: 93%; Rabbit: 93%; Zebrafish: 93%; Yeast: 85%; Sheep: 77%
<b>Protein Families:</b>	Druggable Genome
<b>Protein Pathways:</b>	Glycolysis / Gluconeogenesis, Metabolic pathways, Purine metabolism, Pyruvate metabolism, Type II diabetes mellitus

**Product images:**

WB Suggested Anti-PKM2 Antibody Titration: 0.2-1 ug/ml; ELISA Titer: 1:312500; Positive Control: Human heart



Host: Rabbit; Target Name: PKM; Sample Tissue: Human Fetal Lung; Antibody Dilution: 1.0 ug/ml



Host: Rabbit; Target Name: PKM; Sample Tissue: Human HeLa; Antibody Dilution: 1.0 ug/ml; PKM is supported by BioGPS gene expression data to be expressed in HeLa