

Product datasheet for **TA344599**

Glutaredoxin 2 (GLRX2) Rabbit Polyclonal Antibody

Product data:

| | |
|-------------------------|--|
| Product Type: | Primary Antibodies |
| Applications: | WB |
| Recommended Dilution: | WB |
| Reactivity: | Human |
| Host: | Rabbit |
| Isotype: | IgG |
| Clonality: | Polyclonal |
| Immunogen: | The immunogen for anti-GLRX2 antibody: synthetic peptide directed towards the middle region of human GLRX2. Synthetic peptide located within the following region: NVNYKWELDLLEYGNQFQDALYKMTGERTVPRIFVNGTFIGGATDTHRLH |
| Formulation: | Liquid. Purified antibody supplied in 1x PBS buffer with 0.09% (w/v) sodium azide and 2% sucrose. <i>Note that this product is shipped as lyophilized powder to China customers.</i> |
| Purification: | Affinity Purified |
| Conjugation: | Unconjugated |
| Storage: | Store at -20°C as received. |
| Stability: | Stable for 12 months from date of receipt. |
| Predicted Protein Size: | 18 kDa |
| Gene Name: | glutaredoxin 2 |
| Database Link: | NP_932066 Entrez Gene 51022 Human Q9NS18 |



[View online »](#)

Background:

GLRX2 is a glutathione-dependent oxidoreductase that facilitates the maintenance of mitochondrial redox homeostasis upon induction of apoptosis by oxidative stress. GLRX2 is involved in response to hydrogen peroxide and regulation of apoptosis caused by oxidative stress. GLRX2 acts as a very efficient catalyst of monothiol reactions because of its high affinity for protein glutathione-mixed disulfides. GLRX2 can receive electrons not only from glutathione (GSH), but also from thioredoxin reductase supporting both monothiol and dithiol reactions. GLRX2 efficiently catalyzes both glutathionylation and deglutathionylation of mitochondrial complex I, which in turn regulates the superoxide production by the complex. Overexpression of GLRX2 decreases the susceptibility to apoptosis and prevents loss of cardiolipin and cytochrome c release.

Synonyms:

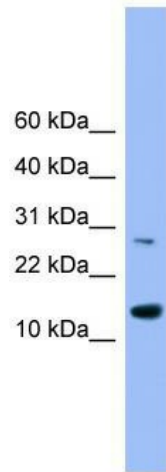
CGI-133; GRX2

Note:

Immunogen Sequence Homology: Human: 100%; Mouse: 93%; Dog: 86%; Pig: 86%; Rat: 86%; Horse: 86%; Sheep: 86%; Bovine: 86%; Rabbit: 86%; Guinea pig: 86%

Protein Families:

Transcription Factors

Product images:

WB Suggested Anti-GLRX2 Antibody Titration: 0.2-1 ug/ml; ELISA Titer: 1:1562500; Positive Control: Human heart