

Product datasheet for **TA344597**

Brevican (BCAN) Rabbit Polyclonal Antibody

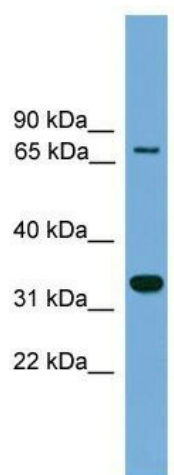
Product data:

Product Type:	Primary Antibodies
Applications:	WB
Recommended Dilution:	WB
Reactivity:	Human
Host:	Rabbit
Isotype:	IgG
Clonality:	Polyclonal
Immunogen:	The immunogen for anti-BCAN antibody: synthetic peptide directed towards the middle region of human BCAN. Synthetic peptide located within the following region: PTETLPTPRERNLASPSTLVEAREVGEATGGPELSGVPRGESEETGSS
Formulation:	Liquid. Purified antibody supplied in 1x PBS buffer with 0.09% (w/v) sodium azide and 2% sucrose.
Purification:	Affinity Purified
Conjugation:	Unconjugated
Storage:	Store at -20°C as received.
Stability:	Stable for 12 months from date of receipt.
Predicted Protein Size:	72 kDa
Gene Name:	brevican
Database Link:	NP_940819 Entrez Gene 63827 Human Q96GW7
Background:	The function of this protein remains unknown.
Synonyms:	BEHAB; CSPG7
Note:	Immunogen Sequence Homology: Pig: 100%; Horse: 100%; Human: 100%; Dog: 93%; Bovine: 93%; Rabbit: 93%; Guinea pig: 93%; Rat: 92%; Mouse: 92%
Protein Families:	Secreted Protein



[View online »](#)

Product images:



WB Suggested Anti-BCAN Antibody Titration: 0.2-1 ug/ml; ELISA Titer: 1:1562500; Positive Control: Hela cell lysate