

## Product datasheet for **TA344595**

### **SERPINB8 Rabbit Polyclonal Antibody**

#### **Product data:**

Product Type:	Primary Antibodies
Applications:	WB
Recommended Dilution:	WB
Reactivity:	Human
Host:	Rabbit
Isotype:	IgG
Clonality:	Polyclonal
Immunogen:	The immunogen for Anti-SERPINB8 antibody is: synthetic peptide directed towards the N-terminal region of Human SERPINB8. Synthetic peptide located within the following region: TAAQMSQALCLYKDGDIHRGFQSLLEVNRTGTQYLLRTANRLFGEKTC
Formulation:	Liquid. Purified antibody supplied in 1x PBS buffer with 0.09% (w/v) sodium azide and 2% sucrose. <i>Note that this product is shipped as lyophilized powder to China customers.</i>
Purification:	Affinity Purified
Conjugation:	Unconjugated
Storage:	Store at -20°C as received.
Stability:	Stable for 12 months from date of receipt.
Predicted Protein Size:	41 kDa
Gene Name:	serpin family B member 8
Database Link:	<a href="#">NP_942130</a> <a href="#">Entrez Gene 5271 Human P50452</a>



[View online »](#)

**Background:**

The superfamily of high molecular weight serine proteinase inhibitors (serpins) regulate a diverse set of intracellular and extracellular processes such as complement activation, fibrinolysis, coagulation, cellular differentiation, tumor suppression, apoptosis, and cell migration. Serpins are characterized by well-conserved a tertiary structure that consists of 3 beta sheets and 8 or 9 alpha helices (Huber and Carrell, 1989 [PubMed 2690952]). A critical portion of the molecule, the reactive center loop connects beta sheets A and C. Protease inhibitor-8 (PI8; SERPINB8) is a member of the ov-serpin subfamily, which, relative to the archetypal serpin PI1 (MIM 107400), is characterized by a high degree of homology to chicken ovalbumin, lack of N- and C-terminal extensions, absence of a signal peptide, and a serine rather than an asparagine residue at the penultimate position (summary by Bartuski et al., 1997 [PubMed 9268635]).

**Synonyms:**

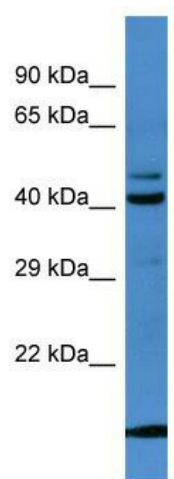
CAP2; PI8

**Note:**

Immunogen Sequence Homology: Human: 100%; Mouse: 92%; Bovine: 90%; Pig: 86%; Rat: 86%; Horse: 86%; Dog: 79%; Rabbit: 79%

**Protein Families:**

Druggable Genome

**Product images:**

Host: Rabbit; Target Name: SERPINB8; Sample Tissue: Fetal Liver lysates; Antibody Dilution: 1.0 ug/ml