

Product datasheet for **TA344594**

SERPINB8 Rabbit Polyclonal Antibody

Product data:

Product Type:	Primary Antibodies
Applications:	WB
Recommended Dilution:	WB
Reactivity:	Human
Host:	Rabbit
Isotype:	IgG
Clonality:	Polyclonal
Immunogen:	The immunogen for anti-SERPINB8 antibody: synthetic peptide directed towards the middle region of human SERPINB8. Synthetic peptide located within the following region: KAWTNSEKLT TKSKVQVFLPRLKLEESYDLEPFLRRLGMIDAFDEAKADFS
Formulation:	Liquid. Purified antibody supplied in 1x PBS buffer with 0.09% (w/v) sodium azide and 2% sucrose. <i>Note that this product is shipped as lyophilized powder to China customers.</i>
Purification:	Affinity Purified
Conjugation:	Unconjugated
Storage:	Store at -20°C as received.
Stability:	Stable for 12 months from date of receipt.
Predicted Protein Size:	43 kDa
Gene Name:	serpin family B member 8
Database Link:	NP_942130 Entrez Gene 5271 Human P50452



[View online »](#)

Background:

The superfamily of high molecular weight serine proteinase inhibitors (serpins) regulate a diverse set of intracellular and extracellular processes such as complement activation, fibrinolysis, coagulation, cellular differentiation, tumor suppression, apoptosis, and cell migration. Serpins are characterized by well-conserved a tertiary structure that consists of 3 beta sheets and 8 or 9 alpha helices (Huber and Carrell, 1989 [PubMed 2690952]). A critical portion of the molecule, the reactive center loop connects beta sheets A and C. Protease inhibitor-8 (PI8; SERPINB8) is a member of the ov-serpin subfamily, which, relative to the archetypal serpin PI1 (MIM 107400), is characterized by a high degree of homology to chicken ovalbumin, lack of N- and C-terminal extensions, absence of a signal peptide, and a serine rather than an asparagine residue at the penultimate position (summary by Bartuski et al., 1997 [PubMed 9268635]).

Synonyms:

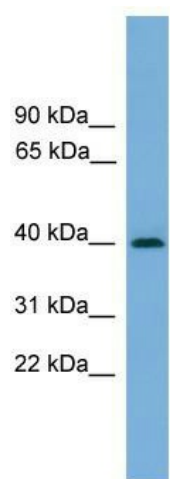
CAP2; PI8

Note:

Immunogen Sequence Homology: Rat: 100%; Human: 100%; Mouse: 100%; Dog: 92%; Pig: 92%; Horse: 92%; Sheep: 91%; Bovine: 91%; Rabbit: 86%; Guinea pig: 83%

Protein Families:

Druggable Genome

Product images:

WB Suggested Anti-SERPINB8 Antibody Titration:
0.2-1 ug/ml; ELISA Titer: 1:312500; Positive
Control: MCF7 cell lysate