

Product datasheet for **TA344593**

C1orf183 (FAM212B) Rabbit Polyclonal Antibody

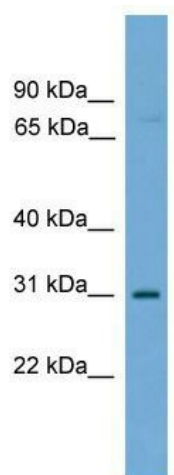
Product data:

Product Type:	Primary Antibodies
Applications:	WB
Recommended Dilution:	WB
Reactivity:	Human
Host:	Rabbit
Isotype:	IgG
Clonality:	Polyclonal
Immunogen:	The immunogen for anti-C1orf183 antibody: synthetic peptide directed towards the middle region of human C1orf183. Synthetic peptide located within the following region: GDNVFADLVGNWLDLPELEKGGKGETGGAREPKGEKGQPQELGRRFALT
Formulation:	Liquid. Purified antibody supplied in 1x PBS buffer with 0.09% (w/v) sodium azide and 2% sucrose. <i>Note that this product is shipped as lyophilized powder to China customers.</i>
Purification:	Affinity Purified
Conjugation:	Unconjugated
Storage:	Store at -20°C as received.
Stability:	Stable for 12 months from date of receipt.
Predicted Protein Size:	31 kDa
Gene Name:	family with sequence similarity 212 member B
Database Link:	NP_945120 Entrez Gene 55924 Human Q9NTI7
Background:	The function of this protein remains unknown.
Synonyms:	C1orf183
Note:	Immunogen Sequence Homology: Human: 100%; Pig: 86%; Guinea pig: 86%



[View online »](#)

Product images:



WB Suggested Anti-C1orf183 Antibody Titration:
0.2-1 ug/ml; Positive Control: MCF7 cell lysate