

Product datasheet for **TA344592**

TH1L (NELFCD) Rabbit Polyclonal Antibody

Product data:

| | |
|-------------------------|--|
| Product Type: | Primary Antibodies |
| Applications: | WB |
| Recommended Dilution: | WB |
| Reactivity: | Human |
| Host: | Rabbit |
| Isotype: | IgG |
| Clonality: | Polyclonal |
| Immunogen: | The immunogen for anti-TH1L antibody: synthetic peptide directed towards the N terminal of human TH1L. Synthetic peptide located within the following region: GEGEDDAEVQQECLHKFSTRDYIMEPSIFNTLKRYFQAGGSPENVIQLLS |
| Formulation: | Liquid. Purified antibody supplied in 1x PBS buffer with 0.09% (w/v) sodium azide and 2% sucrose. <i>Note that this product is shipped as lyophilized powder to China customers.</i> |
| Purification: | Affinity Purified |
| Conjugation: | Unconjugated |
| Storage: | Store at -20°C as received. |
| Stability: | Stable for 12 months from date of receipt. |
| Predicted Protein Size: | 66 kDa |
| Gene Name: | negative elongation factor complex member C/D |
| Database Link: | NP_945327 Entrez Gene 51497 Human Q8IXH7 |
| Background: | The NELF complex of proteins interacts with the DSIF protein complex to repress transcriptional elongation by RNA polymerase II. The protein encoded by this gene is an essential part of the NELF complex. Alternative translation initiation site usage results in the formation of two isoforms with different N-termini. |
| Synonyms: | HSPC130; NELF-C; NELF-D; TH1; TH1L |

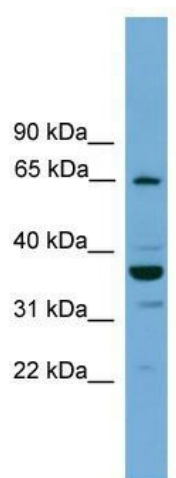


[View online »](#)

Note: Immunogen Sequence Homology: Dog: 100%; Pig: 100%; Rat: 100%; Horse: 100%; Human: 100%; Mouse: 100%; Bovine: 100%; Rabbit: 100%; Guinea pig: 100%; Zebrafish: 93%

Protein Families: Transcription Factors

Product images:



WB Suggested Anti-TH1L Antibody Titration: 0.2-1 ug/ml; Positive Control: Jurkat cell lysate NELFCD is supported by BioGPS gene expression data to be expressed in Jurkat