

## Product datasheet for **TA344590**

### THEG Rabbit Polyclonal Antibody

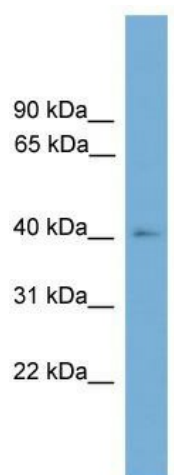
#### Product data:

Product Type:	Primary Antibodies
Applications:	WB
Recommended Dilution:	WB
Reactivity:	Human
Host:	Rabbit
Isotype:	IgG
Clonality:	Polyclonal
Immunogen:	The immunogen for anti-THEG antibody: synthetic peptide directed towards the middle region of human THEG. Synthetic peptide located within the following region: DRPSVYWTERFLEDTTLTITVPAVSRRVEELSRPKRFYLEYNNNRTPV
Formulation:	Liquid. Purified antibody supplied in 1x PBS buffer with 0.09% (w/v) sodium azide and 2% sucrose. <i>Note that this product is shipped as lyophilized powder to China customers.</i>
Purification:	Affinity Purified
Conjugation:	Unconjugated
Storage:	Store at -20°C as received.
Stability:	Stable for 12 months from date of receipt.
Predicted Protein Size:	41 kDa
Gene Name:	theg spermatid protein
Database Link:	<a href="#">NP_954672</a> <a href="#">Entrez Gene 51298 Human</a> <a href="#">Q9P2T0</a>
Background:	This gene is specifically expressed in the nucleus of haploid male germ cells. It encodes a protein that may be involved in the regulation of germ cell nuclear functions. Alternatively spliced transcript variants encoding distinct isoforms have been reported.
Synonyms:	CT56; THEG1
Note:	Immunogen Sequence Homology: Human: 100%; Rat: 93%; Mouse: 93%; Dog: 86%; Pig: 86%; Bovine: 86%; Guinea pig: 85%



[View online »](#)

## Product images:



WB Suggested Anti-THEG Antibody Titration: 0.2-1 ug/ml; ELISA Titer: 1:0; Positive Control: Hela cell lysate