

Product datasheet for **TA344589**

Papillary renal cell carcinoma (PRCC) Rabbit Polyclonal Antibody

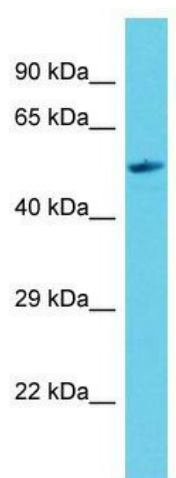
Product data:

Product Type:	Primary Antibodies
Applications:	WB
Recommended Dilution:	WB
Reactivity:	Rat
Host:	Rabbit
Isotype:	IgG
Clonality:	Polyclonal
Immunogen:	The immunogen for Anti-Prcc antibody is: synthetic peptide directed towards the C-terminal region of Rat Prcc. Synthetic peptide located within the following region: KKKGEQPTGQRRKHQITYLIHQAKERELELKNTWSENKLSRRQTQAKYG
Formulation:	Liquid. Purified antibody supplied in 1x PBS buffer with 0.09% (w/v) sodium azide and 2% sucrose. <i>Note that this product is shipped as lyophilized powder to China customers.</i>
Purification:	Affinity Purified
Conjugation:	Unconjugated
Storage:	Store at -20°C as received.
Stability:	Stable for 12 months from date of receipt.
Predicted Protein Size:	53 kDa
Gene Name:	papillary renal cell carcinoma (translocation-associated)
Database Link:	NP_005964 Entrez Gene 310687 Rat Q92733
Background:	The function of this protein remains unknown.
Synonyms:	RCCP1; TPRC
Note:	Immunogen Sequence Homology: Pig: 100%; Rat: 100%; Horse: 100%; Human: 100%; Mouse: 100%; Bovine: 100%; Rabbit: 100%; Guinea pig: 100%; Dog: 93%; Zebrafish: 85%
Protein Families:	Druggable Genome



[View online »](#)

Product images:



Host: Rabbit; Target Name: Prcc; Sample Tissue:
Rat Heart lysates; Antibody Dilution: 1.0 ug/ml