

Product datasheet for **TA344586**

RAB5C Rabbit Polyclonal Antibody

Product data:

Product Type:	Primary Antibodies
Applications:	WB
Recommended Dilution:	WB
Reactivity:	Mouse
Host:	Rabbit
Isotype:	IgG
Clonality:	Polyclonal
Immunogen:	The immunogen for anti-Rab5c antibody: synthetic peptide corresponding to a region of Mouse. Synthetic peptide located within the following region: FARAKNWWKELQRQASPNIVIALAGNKADLASKRAVEFQEAQAYADDNSL
Formulation:	Liquid. Purified antibody supplied in 1x PBS buffer with 0.09% (w/v) sodium azide and 2% sucrose. <i>Note that this product is shipped as lyophilized powder to China customers.</i>
Purification:	Affinity Purified
Conjugation:	Unconjugated
Storage:	Store at -20°C as received.
Stability:	Stable for 12 months from date of receipt.
Predicted Protein Size:	26 kDa
Gene Name:	RAB5C, member RAS oncogene family
Database Link:	NP_958842 Entrez Gene 19345 Mouse P51148
Background:	The function of this protein remains unknown.
Synonyms:	L1880; RAB5CL; RAB5L; RABL
Note:	Immunogen Sequence Homology: Dog: 100%; Pig: 100%; Rat: 100%; Horse: 100%; Human: 100%; Mouse: 100%; Bovine: 100%; Rabbit: 100%; Guinea pig: 100%; Zebrafish: 93%; Sheep: 86%

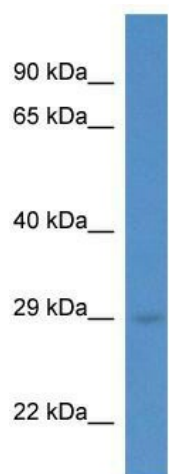


[View online »](#)

Protein Families: Druggable Genome

Protein Pathways: Endocytosis

Product images:



WB Suggested Anti-Rab5c Antibody; Titration: 1.0 ug/ml; Positive Control: Mouse Pancreas