

Product datasheet for **TA344583**

Ribonuclease Inhibitor (RNH1) Rabbit Polyclonal Antibody

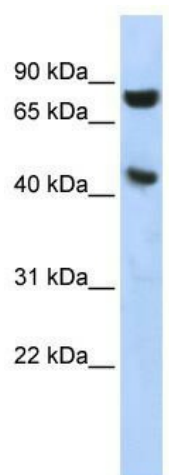
Product data:

Product Type:	Primary Antibodies
Applications:	WB
Recommended Dilution:	WB
Reactivity:	Human
Host:	Rabbit
Isotype:	IgG
Clonality:	Polyclonal
Immunogen:	The immunogen for anti-RNH1 antibody: synthetic peptide directed towards the middle region of human RNH1. Synthetic peptide located within the following region: LLHPSSRLRTLWIWECGITAKGCGDLRCRVLRAKESLKELSLAGNELGDEG
Formulation:	Liquid. Purified antibody supplied in 1x PBS buffer with 0.09% (w/v) sodium azide and 2% sucrose. <i>Note that this product is shipped as lyophilized powder to China customers.</i>
Purification:	Affinity Purified
Conjugation:	Unconjugated
Storage:	Store at -20°C as received.
Stability:	Stable for 12 months from date of receipt.
Predicted Protein Size:	50 kDa
Gene Name:	ribonuclease/angiogenin inhibitor 1
Database Link:	NP_976321 Entrez Gene 6050 Human P13489
Background:	RNH1 is the inhibitor of pancreatic RNase and angiogenin. RNH1 may also function in the modulation of cellular activities.
Synonyms:	RAI; RNH
Note:	Immunogen Sequence Homology: Rat: 100%; Human: 100%; Pig: 92%; Horse: 92%; Bovine: 92%; Mouse: 86%



[View online »](#)

Product images:



WB Suggested Anti-RNH1 Antibody Titration: 0.2-1 ug/ml; ELISA Titer: 1:1562500; Positive Control: HepG2 cell lysate