

Product datasheet for **TA344578**

Protein Kinase A regulatory subunit I alpha (PRKAR1A) Rabbit Polyclonal Antibody

Product data:

Product Type:	Primary Antibodies
Applications:	WB
Recommended Dilution:	WB
Reactivity:	Rat, Mouse
Host:	Rabbit
Isotype:	IgG
Clonality:	Polyclonal
Immunogen:	The immunogen for Anti-Prkar1a antibody is: synthetic peptide directed towards the N-terminal region of Rat Prkar1a. Synthetic peptide located within the following region: REYFERLEKEEARQIQSLQKSGIRTDSREDEISPPPPNPVVKGRRRRGAI
Formulation:	Liquid. Purified antibody supplied in 1x PBS buffer with 0.09% (w/v) sodium azide and 2% sucrose. <i>Note that this product is shipped as lyophilized powder to China customers.</i>
Purification:	Affinity Purified
Conjugation:	Unconjugated
Storage:	Store at -20°C as received.
Stability:	Stable for 12 months from date of receipt.
Predicted Protein Size:	41 kDa
Gene Name:	protein kinase cAMP-dependent type I regulatory subunit alpha
Database Link:	NP_997636 Entrez Gene 19084 Mouse Entrez Gene 25725 Rat P10644
Background:	Prkar1a is a regulatory subunit of cAMP-dependent protein kinase (PKA); negatively regulates meiosis .
Synonyms:	ACRDYS1; ADOHR; CAR; CNC; CNC1; PKR1; PPNAD1; PRKAR1; TSE1
Note:	Immunogen Sequence Homology: Pig: 100%; Rat: 100%; Human: 100%; Rabbit: 100%; Guinea pig: 100%; Horse: 93%; Mouse: 93%; Sheep: 86%; Bovine: 86%; Dog: 79%; Zebrafish: 77%

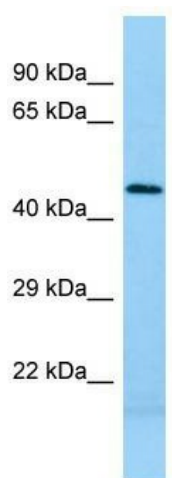


[View online »](#)

Protein Families: Druggable Genome, Transcription Factors

Protein Pathways: Apoptosis, Insulin signaling pathway

Product images:



WB Suggested Anti-Prkar1a Antibody; Titration:
1.0 ug/ml; Positive Control: Rat Spleen