

Product datasheet for **TA344574**

26S proteasome non ATPase regulatory subunit 12 (PSMD12) Rabbit Polyclonal Antibody

Product data:

Product Type:	Primary Antibodies
Applications:	WB
Recommended Dilution:	WB
Reactivity:	Human
Host:	Rabbit
Isotype:	IgG
Clonality:	Polyclonal
Immunogen:	The immunogen for anti-PSMD12 antibody: synthetic peptide directed towards the middle region of human PSMD12. Synthetic peptide located within the following region: KYKDLLKLFITMELMRWSTLVEDYGMELRKGSLSPATDVFGSTEEGEKR
Formulation:	Liquid. Purified antibody supplied in 1x PBS buffer with 0.09% (w/v) sodium azide and 2% sucrose. <i>Note that this product is shipped as lyophilized powder to China customers.</i>
Purification:	Affinity Purified
Conjugation:	Unconjugated
Storage:	Store at -20°C as received.
Stability:	Stable for 12 months from date of receipt.
Predicted Protein Size:	53
Gene Name:	proteasome 26S subunit, non-ATPase 12
Database Link:	NP_002807 Entrez Gene 5718 Human O00232



[View online »](#)

Background:

The 26S proteasome is a multicatalytic proteinase complex with a highly ordered structure composed of 2 complexes, a 20S core and a 19S regulator. The 20S core is composed of 4 rings of 28 non-identical subunits; 2 rings are composed of 7 alpha subunits and 2 rings are composed of 7 beta subunits. The 19S regulator is composed of a base, which contains 6 ATPase subunits and 2 non-ATPase subunits, and a lid, which contains up to 10 non-ATPase subunits. Proteasomes are distributed throughout eukaryotic cells at a high concentration and cleave peptides in an ATP/ubiquitin-dependent process in a non-lysosomal pathway. An essential function of a modified proteasome, the immunoproteasome, is the processing of class I MHC peptides. This gene encodes a non-ATPase subunit of the 19S regulator. A pseudogene has been identified on chromosome 3.

Synonyms:

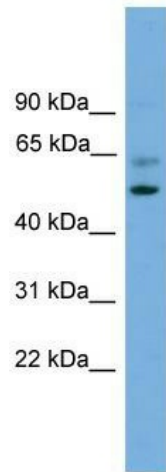
p55; Rpn5

Note:

Immunogen Sequence Homology: Human: 100%; Rabbit: 100%; Dog: 93%; Pig: 93%; Rat: 93%; Mouse: 93%; Bovine: 93%; Guinea pig: 93%; Horse: 86%; Zebrafish: 85%

Protein Pathways:

Proteasome

Product images:

WB Suggested Anti-PSMD12 Antibody Titration: 0.2-1 ug/ml; ELISA Titer: 1:62500; Positive Control: Hela cell lysate PSMD12 is supported by BioGPS gene expression data to be expressed in HeLa