

Product datasheet for **TA344572**

SPDYE1 Rabbit Polyclonal Antibody

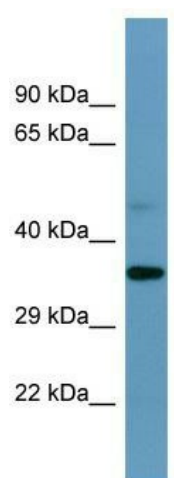
Product data:

Product Type:	Primary Antibodies
Applications:	WB
Recommended Dilution:	WB
Reactivity:	Human
Host:	Rabbit
Isotype:	IgG
Clonality:	Polyclonal
Immunogen:	The immunogen for Anti-SPDYE1 antibody is: synthetic peptide directed towards the C-terminal region of Human SPDYE1. Synthetic peptide located within the following region: RCMNPRARKNRSQIVLFQKRRFHHFFCSMSCRAWVSPEELEEIQAYDPEHW
Formulation:	Liquid. Purified antibody supplied in 1x PBS buffer with 0.09% (w/v) sodium azide and 2% sucrose.
Purification:	Affinity Purified
Conjugation:	Unconjugated
Storage:	Store at -20°C as received.
Stability:	Stable for 12 months from date of receipt.
Predicted Protein Size:	36 kDa
Gene Name:	speedy/RINGO cell cycle regulator family member E1
Database Link:	NP_778234 Entrez Gene 285955 Human Q8NEV5
Background:	This gene is located at chromosome 7p13 which is close to the Williams Beuren syndrome chromosome region 7q11.23.
Synonyms:	Ringo1; SPDYE; WBSCR19
Note:	Immunogen Sequence Homology: Human: 100%; Rat: 92%; Mouse: 92%; Rabbit: 92%



[View online »](#)

Product images:



Host: Rabbit; Target Name: SPDYE1; Sample
Tissue: U937 Whole cell lysates; Antibody
Dilution: 1.0 ug/ml