

## Product datasheet for **TA344570**

### MID2 Rabbit Polyclonal Antibody

#### Product data:

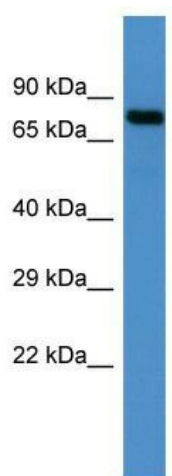
Product Type:	Primary Antibodies
Applications:	WB
Recommended Dilution:	WB
Reactivity:	Human
Host:	Rabbit
Isotype:	IgG
Clonality:	Polyclonal
Immunogen:	The immunogen for Anti-MID2 antibody is: synthetic peptide directed towards the C-terminal region of Human MID2. Synthetic peptide located within the following region: WGLWPEIRKCKEAVSCSRLAGAPRGLYNSVDSWMIVPNIKQNHYTEVHGLQ
Formulation:	Liquid. Purified antibody supplied in 1x PBS buffer with 0.09% (w/v) sodium azide and 2% sucrose. <i>Note that this product is shipped as lyophilized powder to China customers.</i>
Purification:	Affinity Purified
Conjugation:	Unconjugated
Storage:	Store at -20°C as received.
Stability:	Stable for 12 months from date of receipt.
Predicted Protein Size:	80 kDa
Gene Name:	midline 2
Database Link:	<a href="#">NP_036348</a> <a href="#">Entrez Gene 11043 Human</a> <a href="#">Q9UJV3</a>
Background:	The protein encoded by this gene is a member of the tripartite motif (TRIM) family. The TRIM motif includes three zinc-binding domains, a RING, a B-box type 1 and a B-box type 2, and a coiled-coil region. The protein localizes to microtubular structures in the cytoplasm. Alternate splicing of this gene results in two transcript variants encoding different isoforms.
Synonyms:	FXY2; MRX101; RNF60; TRIM1
Note:	Immunogen Sequence Homology: Rat: 100%; Human: 100%; Mouse: 92%



[View online »](#)

Protein Families: Druggable Genome

### Product images:



Host: Rabbit; Target Name: MID2; Sample Tissue: NCI-H226 Whole Cell lysates; Antibody Dilution: 1.0 ug/ml; MID2 is supported by BioGPS gene expression data to be expressed in NCIH226