

Product datasheet for **TA344568**

Calcipressin 1 (RCAN1) Rabbit Polyclonal Antibody

Product data:

Product Type:	Primary Antibodies
Applications:	WB
Recommended Dilution:	WB
Reactivity:	Human
Host:	Rabbit
Isotype:	IgG
Clonality:	Polyclonal
Immunogen:	The immunogen for anti-RCAN1 antibody: synthetic peptide directed towards the N terminal of human RCAN1. Synthetic peptide located within the following region: MEDGVAGPQLGAAAEAAEAEARARPGVTLRPFAPLSGAAEADEGGGDWS
Formulation:	Liquid. Purified antibody supplied in 1x PBS buffer with 0.09% (w/v) sodium azide and 2% sucrose. <i>Note that this product is shipped as lyophilized powder to China customers.</i>
Purification:	Affinity Purified
Conjugation:	Unconjugated
Storage:	Store at -20°C as received.
Stability:	Stable for 12 months from date of receipt.
Predicted Protein Size:	28 kDa
Gene Name:	regulator of calcineurin 1
Database Link:	NP_004405 Entrez Gene 1827 Human P53805
Background:	RCAN1 interacts with calcineurin A and inhibits calcineurin-dependent signaling pathways, possibly affecting central nervous system development. This gene is located in the minimal candidate region for the Down syndrome phenotype, and is overexpressed in the brain of Down syndrome fetuses. Chronic overexpression of this gene may lead to neurofibrillary tangles such as those associated with Alzheimer disease.
Synonyms:	ADAPT78; CSP1; DSC1; DSCR1; MCIP1; RCN1

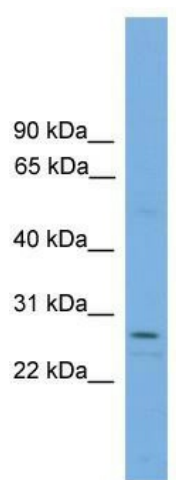


[View online »](#)

Note: Immunogen Sequence Homology: Human: 100%; Dog: 93%; Rat: 92%; Mouse: 77%

Protein Families: Transcription Factors

Product images:



WB Suggested Anti-RCAN1 Antibody Titration:
0.2-1 ug/ml; ELISA Titer: 1:1562500; Positive
Control: Human Placenta