

Product datasheet for **TA344567**

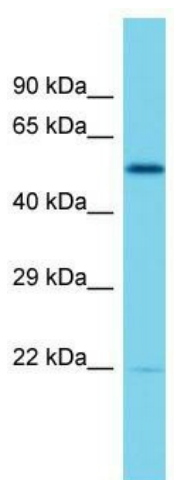
ELF2 Rabbit Polyclonal Antibody

Product data:

Product Type:	Primary Antibodies
Applications:	WB
Recommended Dilution:	WB
Reactivity:	Rat
Host:	Rabbit
Isotype:	IgG
Clonality:	Polyclonal
Immunogen:	The immunogen for Anti-Elf2 antibody is: synthetic peptide directed towards the middle region of Rat Elf2. Synthetic peptide located within the following region: TCPRIYIKWTQREKGFIFKLVDSKAVSKLWKGKHKNKPDMMNYETMGRALRYYY
Formulation:	Liquid. Purified antibody supplied in 1x PBS buffer with 0.09% (w/v) sodium azide and 2% sucrose. <i>Note that this product is shipped as lyophilized powder to China customers.</i>
Purification:	Affinity Purified
Conjugation:	Unconjugated
Storage:	Store at -20°C as received.
Stability:	Stable for 12 months from date of receipt.
Predicted Protein Size:	57 kDa
Gene Name:	E74 like ETS transcription factor 2
Database Link:	NP_973728 Entrez Gene 361944 Rat Q15723
Background:	The function of this protein remains unknown.
Synonyms:	b; EU32; NERF; NERF-1A; NERF-1a; NERF-1B; NERF-2
Note:	Immunogen Sequence Homology: Dog: 100%; Pig: 100%; Rat: 100%; Horse: 100%; Human: 100%; Mouse: 100%; Bovine: 100%; Rabbit: 100%; Guinea pig: 100%; Zebrafish: 93%
Protein Families:	Druggable Genome, Transcription Factors



[View online »](#)

Product images:

Host: Rabbit; Target Name: Elf2; Sample Tissue:
Rat Thymus lysates; Antibody Dilution: 1.0 ug/ml