

Product datasheet for **TA344566**

Transcription factor 25 (TCF25) Rabbit Polyclonal Antibody

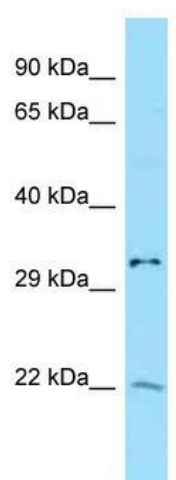
Product data:

| | |
|-------------------------|---|
| Product Type: | Primary Antibodies |
| Applications: | WB |
| Recommended Dilution: | WB |
| Reactivity: | Human |
| Host: | Rabbit |
| Isotype: | IgG |
| Clonality: | Polyclonal |
| Immunogen: | The immunogen for Anti-NULP1 antibody is: synthetic peptide directed towards the N-terminal region of Human NULP1. Synthetic peptide located within the following region: DLRDDDDAEEEGPKRELGVRRPGGAGKEGVRRVNNRFELINIDDLEDDPVV |
| Formulation: | Liquid. Purified antibody supplied in 1x PBS buffer with 0.09% (w/v) sodium azide and 2% sucrose. <i>Note that this product is shipped as lyophilized powder to China customers.</i> |
| Purification: | Affinity Purified |
| Conjugation: | Unconjugated |
| Storage: | Store at -20°C as received. |
| Stability: | Stable for 12 months from date of receipt. |
| Predicted Protein Size: | 23 kDa |
| Gene Name: | transcription factor 25 |
| Database Link: | NP_055787 Entrez Gene 22980 Human Q9BQ70 |
| Background: | The function of this protein remains unknown. |
| Synonyms: | FKSG26; hKIAA1049; Hulp1; NULP1; PRO2620 |
| Note: | Immunogen Sequence Homology: Dog: 100%; Pig: 100%; Rat: 100%; Human: 100%; Mouse: 100%; Guinea pig: 100%; Horse: 93%; Yeast: 83%; Bovine: 83%; Zebrafish: 83% |



[View online »](#)

Product images:



Host: Rabbit; Target Name: NULP1; Sample
Tissue: ACHN whole cell lysates; Antibody
Dilution: 1.0 ug/ml