

Product datasheet for **TA344565**

MPRIP Rabbit Polyclonal Antibody

Product data:

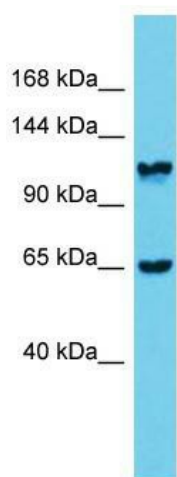
Product Type:	Primary Antibodies
Applications:	WB
Recommended Dilution:	WB
Reactivity:	Rat
Host:	Rabbit
Isotype:	IgG
Clonality:	Polyclonal
Immunogen:	The immunogen for Anti-Mprip antibody is: synthetic peptide directed towards the middle region of Rat Mprip. Synthetic peptide located within the following region: ATISAIEAMKNAHREEMERELEKSQRSQISSINSIDIEALRRQYLEELQSV
Formulation:	Liquid. Purified antibody supplied in 1x PBS buffer with 0.09% (w/v) sodium azide and 2% sucrose. <i>Note that this product is shipped as lyophilized powder to China customers.</i>
Purification:	Affinity Purified
Conjugation:	Unconjugated
Storage:	Store at -20°C as received.
Stability:	Stable for 12 months from date of receipt.
Predicted Protein Size:	113 kDa
Gene Name:	myosin phosphatase Rho interacting protein
Database Link:	NP_958431 Entrez Gene 116504 Rat Q6WCQ1
Background:	Mouse homolog binds F-actin and may play a role in F-actin bundling and cytoskeleton organization.
Synonyms:	M-RIP; MRIP; p116Rip; RHOIP3; RIP3
Note:	Immunogen Sequence Homology: Human: 100%; Pig: 93%; Horse: 93%; Bovine: 93%; Dog: 86%; Rat: 86%; Mouse: 86%; Rabbit: 86%; Guinea pig: 86%



[View online »](#)

Protein Families: Druggable Genome

Product images:



Host: Rabbit; Target Name: Mprrip; Sample Tissue: Rat Stomach lysates; Antibody Dilution: 1.0 ug/ml