

## Product datasheet for **TA344557**

### PRRX2 Rabbit Polyclonal Antibody

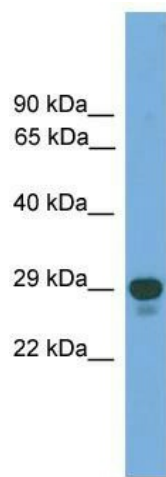
#### Product data:

Product Type:	Primary Antibodies
Applications:	WB
Recommended Dilution:	WB
Reactivity:	Human
Host:	Rabbit
Isotype:	IgG
Clonality:	Polyclonal
Immunogen:	The immunogen for anti-PRRX2 antibody: synthetic peptide directed towards the middle region of human PRRX2. Synthetic peptide located within the following region: REPSGGSSGSEAAPQDGECPSGRGSAAKRKKKQRRNRTTFNSSLQALE
Formulation:	Liquid. Purified antibody supplied in 1x PBS buffer with 0.09% (w/v) sodium azide and 2% sucrose. <i>Note that this product is shipped as lyophilized powder to China customers.</i>
Purification:	Affinity Purified
Conjugation:	Unconjugated
Storage:	Store at -20°C as received.
Stability:	Stable for 12 months from date of receipt.
Predicted Protein Size:	27 kDa
Gene Name:	paired related homeobox 2
Database Link:	<a href="#">NP_057391</a> <a href="#">Entrez Gene 51450 Human Q99811</a>



[View online »](#)

<b>Background:</b>	PRRX2 is a member of the paired family of homeobox proteins. Expression is localized to proliferating fetal fibroblasts and the developing dermal layer, with downregulated expression in adult skin. Increases in expression of this gene during fetal but not adult wound healing suggest a possible role in mechanisms that control mammalian dermal regeneration and prevent formation of scar response to wounding. The expression patterns provide evidence consistent with a role in fetal skin development and a possible role in cellular proliferation.
<b>Synonyms:</b>	PMX2; PRX2
<b>Note:</b>	Immunogen Sequence Homology: Human: 100%; Dog: 93%; Pig: 93%; Horse: 93%; Bovine: 93%; Rat: 86%; Mouse: 79%
<b>Protein Families:</b>	Transcription Factors

**Product images:**

WB Suggested Anti-PRRX2 Antibody Titration: 0.2-1 ug/ml; ELISA Titer: 1:312500; Positive Control: Human heart