

Product datasheet for **TA344552**

SOX15 Rabbit Polyclonal Antibody

Product data:

Product Type:	Primary Antibodies
Applications:	WB
Recommended Dilution:	WB
Reactivity:	Human
Host:	Rabbit
Isotype:	IgG
Clonality:	Polyclonal
Immunogen:	The immunogen for anti-SOX15 antibody: synthetic peptide directed towards the N terminal of human SOX15. Synthetic peptide located within the following region: ALPGSSQDQAWSLEPPAATAAASSSSGPQEREGAGSPAAPGTLPLEKVKR
Formulation:	Liquid. Purified antibody supplied in 1x PBS buffer with 0.09% (w/v) sodium azide and 2% sucrose. <i>Note that this product is shipped as lyophilized powder to China customers.</i>
Purification:	Affinity Purified
Conjugation:	Unconjugated
Storage:	Store at -20°C as received.
Stability:	Stable for 12 months from date of receipt.
Predicted Protein Size:	25 kDa
Gene Name:	SRY-box 15
Database Link:	NP_008873 Entrez Gene 6665 Human O60248



[View online »](#)

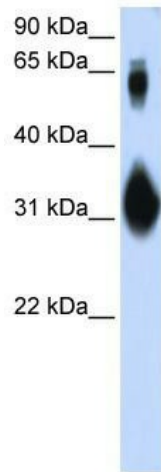
Background: SOX15 is a member of the SOX (SRY-related HMG-box) family of transcription factors involved in the regulation of embryonic development and in the determination of the cell fate. The protein may act as a transcriptional regulator after forming a protein complex with other proteins. This gene encodes a member of the SOX (SRY-related HMG-box) family of transcription factors involved in the regulation of embryonic development and in the determination of the cell fate. The encoded protein may act as a transcriptional regulator after forming a protein complex with other proteins. This gene encodes a member of the SOX (SRY-related HMG-box) family of transcription factors involved in the regulation of embryonic development and in the determination of the cell fate. The encoded protein may act as a transcriptional regulator after forming a protein complex with other proteins.

Synonyms: SOX20; SOX26; SOX27

Note: Immunogen Sequence Homology: Human: 100%; Bovine: 100%; Dog: 92%; Pig: 92%; Horse: 85%

Protein Families: Transcription Factors

Product images:



WB Suggested Anti-SOX15 Antibody Titration: 0.2-1 ug/ml; ELISA Titer: 1:62500; Positive Control: Transfected 293T