

Product datasheet for **TA344549**

HNF1 alpha (HNF1A) Rabbit Polyclonal Antibody

Product data:

Product Type:	Primary Antibodies
Applications:	WB
Recommended Dilution:	WB
Reactivity:	Human
Host:	Rabbit
Isotype:	IgG
Clonality:	Polyclonal
Immunogen:	The immunogen for anti-HNF1A antibody: synthetic peptide directed towards the N terminal of human HNF1A. Synthetic peptide located within the following region: HAGQGGLIEEPTGDELPTKKGRRNRFKWGPASQILFQAYERQKNPSKEE
Formulation:	Liquid. Purified antibody supplied in 1x PBS buffer with 0.09% (w/v) sodium azide and 2% sucrose. <i>Note that this product is shipped as lyophilized powder to China customers.</i>
Purification:	Affinity Purified
Conjugation:	Unconjugated
Storage:	Store at -20°C as received.
Stability:	Stable for 12 months from date of receipt.
Predicted Protein Size:	67 kDa
Gene Name:	HNF1 homeobox A
Database Link:	NP_000536 Entrez Gene 6927 Human P20823
Background:	HNF1A is required for the expression of several liver specific genes. HNF1A binds to the inverted palindrome 5'-GTTAATNATTAAC-3'.
Synonyms:	HNF-1A; HNF1; IDDM20; LFB1; MODY3; TCF-1; TCF1
Note:	Immunogen Sequence Homology: Dog: 100%; Pig: 100%; Rat: 100%; Horse: 100%; Human: 100%; Mouse: 100%; Sheep: 100%; Bovine: 100%; Zebrafish: 100%; Guinea pig: 100%; Rabbit: 86%

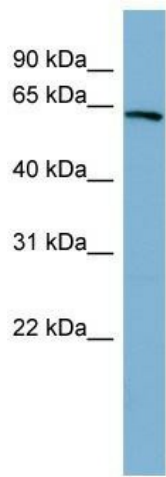


[View online »](#)

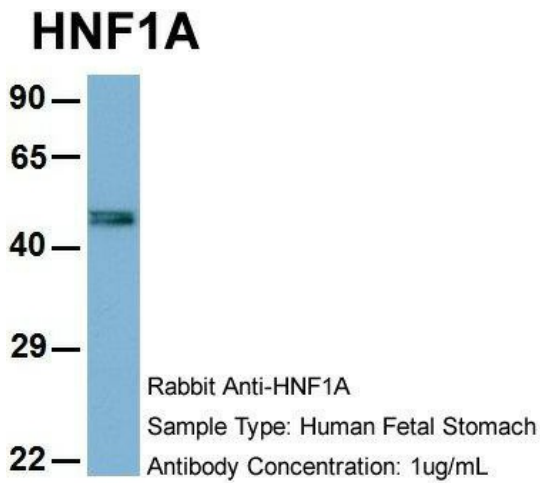
Protein Families: Adult stem cells, Druggable Genome, ES Cell Differentiation/IPS, Transcription Factors

Protein Pathways: Maturity onset diabetes of the young

Product images:

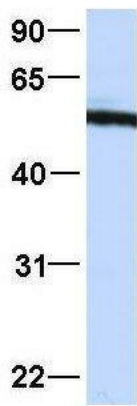


WB Suggested Anti-HNF1A Antibody Titration:
0.2-1 ug/ml; ELISA Titer: 1:312500; Positive
Control: Human kidney



Host: Rabbit; Target Name: HNF1A; Sample
Tissue: Human Fetal Stomach; Antibody Dilution:
1.0 ug/ml

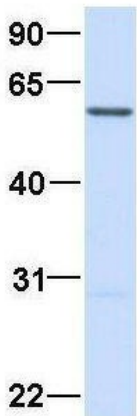
HNF1A



Rabbit Anti-HNF1A
 Sample Type: Human HepG2
 Antibody Concentration: 1ug/mL

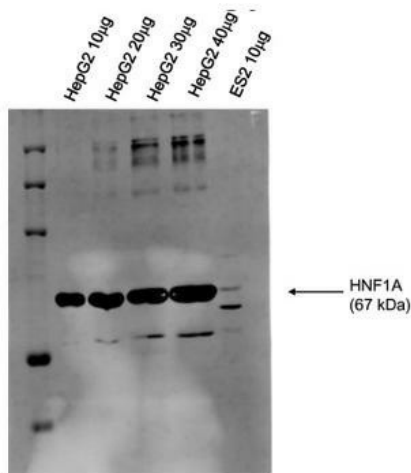
Host: Rabbit; Target Name: HNF1A; Sample Tissue: HepG2; Antibody Dilution: 1.0 ug/ml

HNF1A



Rabbit Anti-HNF1A
 Sample Type: Human Adult Placenta
 Antibody Concentration: 1ug/mL

Host: Rabbit; Target Name: HNF1A; Sample Tissue: Human Adult Placenta; Antibody Dilution: 1.0 ug/ml



Sample Type: Human Liver Carcinoma (HepG2 lysate) 10-40ug lysate/lane
 Primary Dilution: 1:1000
 Secondary: Alexa Fluor 680 Donkey Anti-Rabbit IgG Invitrogen
 Secondary Dilution: 1:30,000
 HNF1A is strongly supported by BioGPS gene expression data to be expressed