

Product datasheet for **TA344546**

TCF7L1 Rabbit Polyclonal Antibody

Product data:

Product Type:	Primary Antibodies
Applications:	WB
Recommended Dilution:	WB
Reactivity:	Human
Host:	Rabbit
Isotype:	IgG
Clonality:	Polyclonal
Immunogen:	The immunogen for anti-TCF7L1 antibody: synthetic peptide directed towards the N terminal of human TCF7L1. Synthetic peptide located within the following region: ESENQSSSDSEAERRPQVRDTFQKPRDYFAEVRPQDSAFFKGPPYPG
Formulation:	Liquid. Purified antibody supplied in 1x PBS buffer with 0.09% (w/v) sodium azide and 2% sucrose. <i>Note that this product is shipped as lyophilized powder to China customers.</i>
Purification:	Affinity Purified
Conjugation:	Unconjugated
Storage:	Store at -20°C as received.
Stability:	Stable for 12 months from date of receipt.
Predicted Protein Size:	63 kDa
Gene Name:	transcription factor 7 like 1
Database Link:	NP_112573 Entrez Gene 83439 Human Q9HCS4
Background:	TCF7L1 participates in the Wnt signaling pathway. It binds to DNA and acts as a repressor in the absence of CTNNB1, and as an activator in its presence. It is necessary for the terminal differentiation of epidermal cells, the formation of keratohyalin granules and the development of the barrier function of the epidermis. TCF7L1 down-regulates NQO1, leading to increased mitomycin c resistance.
Synonyms:	TCF-3; TCF3



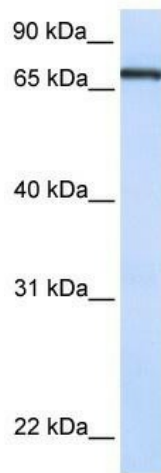
[View online »](#)

Note: Immunogen Sequence Homology: Human: 100%; Dog: 86%; Rat: 86%; Mouse: 86%; Bovine: 86%; Rabbit: 86%

Protein Families: Druggable Genome, Transcription Factors

Protein Pathways: Acute myeloid leukemia, Adherens junction, Arrhythmogenic right ventricular cardiomyopathy (ARVC), Basal cell carcinoma, Colorectal cancer, Endometrial cancer, Melanogenesis, Pathways in cancer, Prostate cancer, Thyroid cancer, Wnt signaling pathway

Product images:



WB Suggested Anti-TCF7L1 Antibody Titration: 0.2-1 ug/ml; ELISA Titer: 1:1562500; Positive Control: 293T cell lysate

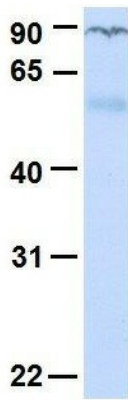
TCF7L1



Rabbit Anti-TCF7L1
Sample Type: Human Fetal Liver
Antibody Concentration: 1ug/mL

Host: Rabbit; Target Name: TCF7L1; Sample Tissue: Human Fetal Liver; Antibody Dilution: 1.0 ug/ml

TCF7L1



Rabbit Anti-TCF7L1
Sample Type: Human Fetal Lung
Antibody Concentration: 1ug/mL

Host: Rabbit; Target Name: TCF7L1; Sample
Tissue: Human Fetal Lung; Antibody Dilution: 1.0
ug/ml