

Product datasheet for **TA344545**

KAT2B Rabbit Polyclonal Antibody

Product data:

Product Type:	Primary Antibodies
Applications:	WB
Recommended Dilution:	WB
Reactivity:	Human
Host:	Rabbit
Isotype:	IgG
Clonality:	Polyclonal
Immunogen:	The immunogen for anti-PCAF antibody: synthetic peptide directed towards the C terminal of human PCAF. Synthetic peptide located within the following region: PGLSCFKDGVQRQIPIESIPGIRETGWKPSGKEKSKEPRDPDQLYSTLKSI
Formulation:	Liquid. Purified antibody supplied in 1x PBS buffer with 0.09% (w/v) sodium azide and 2% sucrose. <i>Note that this product is shipped as lyophilized powder to China customers.</i>
Purification:	Affinity Purified
Conjugation:	Unconjugated
Storage:	Store at -20°C as received.
Stability:	Stable for 12 months from date of receipt.
Predicted Protein Size:	93 kDa
Gene Name:	lysine acetyltransferase 2B
Database Link:	NP_003875 Entrez Gene 8850 Human Q92831



[View online »](#)

Background:

CBP and p300 are large nuclear proteins that bind to many sequence-specific factors involved in cell growth and/or differentiation, including c-jun and the adenoviral oncoprotein E1A. PCAF associates with p300/CBP. It has in vitro and in vivo binding activity with CBP and p300, and competes with E1A for binding sites in p300/CBP. It has histone acetyl transferase activity with core histones and nucleosome core particles, indicating that this protein plays a direct role in transcriptional regulation. CBP and p300 are large nuclear proteins that bind to many sequence-specific factors involved in cell growth and/or differentiation, including c-jun and the adenoviral oncoprotein E1A. The protein encoded by this gene associates with p300/CBP. It has in vitro and in vivo binding activity with CBP and p300, and competes with E1A for binding sites in p300/CBP. It has histone acetyl transferase activity with core histones and nucleosome core particles, indicating that this protein plays a direct role in transcriptional regulation. CBP and p300 are large nuclear proteins that bind to many sequence-specific factors involved in cell growth and/or differentiation, including c-jun and the adenoviral oncoprotein E1A. The protein encoded by this gene associates with p300/CBP. It has in vitro and in vivo binding activity with CBP and p300, and competes with E1A for binding sites in p300/CBP. It has histone acetyl transferase activity with core histones and nucleosome core particles, indicating that this protein plays a direct role in transcriptional regulation. Sequence Note: The RefSeq transcript and protein were derived from genomic sequence to make the sequence consistent with the reference genome assembly. The genomic coordinates used for the transcript record were based on alignments. Publication Note: This RefSeq record includes a subset of the publications that are available for this gene. Please see the Entrez Gene record to access additional publications. PRIMARYREFSEQ_SPAN PRIMARY_IDENTIFIER PRIMARY_SPAN COMP 1-749 AC099057.3 17115-17863 750-876 AC099057.3 49416-49542 877-1022 AC099057.3 72346-72491 1023-1115 AC099057.3 76945-77037 1116-1297 AC099057.3 78370-78551 1298-1489 AC099057.3 88679-88870 1490-1596 AC099057.3 91965-92071 1597-1722 AC099057.3 96681-96806 1723-1859 AC099057.3 99751-99887 1860-2068 AC099057.3 102988-103196 2069-2195 AC099057.3 104506-104632 2196-2306 AC099057.3 114025-114135 2307-2450 AC099057.3 117304-117447 2451-2565 AC099057.3 123399-123513 2566-2602 AC099057.3 125046-125082 2603-2666 AC099057.3 125326-125389 2667-2751 AC099057.3 125486-125570 2752-4824 AC099057.3 129415-131487

Synonyms:

CAF; P; PCAF

Note:

Immunogen Sequence Homology: Human: 100%; Dog: 93%; Pig: 93%; Horse: 93%; Rabbit: 93%; Guinea pig: 93%; Rat: 86%; Mouse: 86%; Bovine: 79%

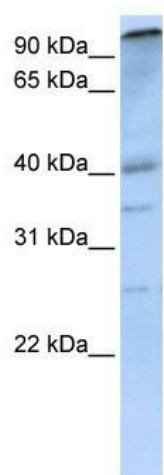
Protein Families:

Druggable Genome, Transcription Factors

Protein Pathways:

Notch signaling pathway

Product images:



WB Suggested Anti-PCAF Antibody Titration: 0.2-1 ug/ml; ELISA Titer: 1:312500; Positive Control: MCF7 cell lysate