

## Product datasheet for **TA344544**

### TAF1C Rabbit Polyclonal Antibody

#### Product data:

Product Type:	Primary Antibodies
Applications:	WB
Recommended Dilution:	WB
Reactivity:	Human
Host:	Rabbit
Isotype:	IgG
Clonality:	Polyclonal
Immunogen:	The immunogen for anti-TAF1C antibody: synthetic peptide directed towards the N terminal of human TAF1C. Synthetic peptide located within the following region: MDFPSSLRPALFLTGPLGLSDVPDLSFMCSWRDALTLPEAQPQNSENGAL
Formulation:	Liquid. Purified antibody supplied in 1x PBS buffer with 0.09% (w/v) sodium azide and 2% sucrose. <i>Note that this product is shipped as lyophilized powder to China customers.</i>
Purification:	Affinity Purified
Conjugation:	Unconjugated
Storage:	Store at -20°C as received.
Stability:	Stable for 12 months from date of receipt.
Predicted Protein Size:	95 kDa
Gene Name:	TATA-box binding protein associated factor, RNA polymerase I subunit C
Database Link:	<a href="#">NP_005670</a> <a href="#">Entrez Gene 9013 Human Q15572</a>



[View online »](#)

**Background:**

Initiation of transcription by RNA polymerase I requires the formation of a complex composed of the TATA-binding protein (TBP) and three TBP-associated factors (TAFs) specific for RNA polymerase I. This complex, known as SL1, binds to the core promoter of ribosomal RNA genes to position the polymerase properly and acts as a channel for regulatory signals. TAF1C is the largest SL1-specific TAF. Initiation of transcription by RNA polymerase I requires the formation of a complex composed of the TATA-binding protein (TBP) and three TBP-associated factors (TAFs) specific for RNA polymerase I. This complex, known as SL1, binds to the core promoter of ribosomal RNA genes to position the polymerase properly and acts as a channel for regulatory signals. This gene encodes the largest SL1-specific TAF. Two transcripts encoding different isoforms have been identified.

**Synonyms:**

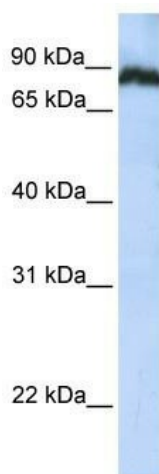
MGC:39976; SL1; TAFI95; TAFI110

**Note:**

Immunogen Sequence Homology: Human: 100%; Pig: 93%; Rat: 93%; Horse: 93%; Bovine: 93%; Guinea pig: 93%; Dog: 86%; Mouse: 77%

**Protein Families:**

Transcription Factors

**Product images:**


WB Suggested Anti-TAF1C Antibody Titration: 0.2-1 ug/ml; ELISA Titer: 1:62500; Positive Control: Jurkat cell lysate TAF1C is strongly supported by BioGPS gene expression data to be expressed in Human Jurkat cells