

## Product datasheet for **TA344543**

### Membralin (TMEM259) Rabbit Polyclonal Antibody

#### Product data:

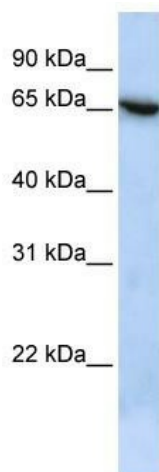
Product Type:	Primary Antibodies
Applications:	WB
Recommended Dilution:	WB
Reactivity:	Human
Host:	Rabbit
Isotype:	IgG
Clonality:	Polyclonal
Immunogen:	The immunogen for anti-C19orf6 antibody: synthetic peptide directed towards the N terminal of human C19orf6. Synthetic peptide located within the following region: SEHVEPAAPGPGPNGGGGGPAPARGPRTPNLNPNPLINVRDLFHALFFK
Formulation:	Liquid. Purified antibody supplied in 1x PBS buffer with 0.09% (w/v) sodium azide and 2% sucrose.
Purification:	Affinity Purified
Conjugation:	Unconjugated
Storage:	Store at -20°C as received.
Stability:	Stable for 12 months from date of receipt.
Predicted Protein Size:	68 kDa
Gene Name:	transmembrane protein 259
Database Link:	<a href="#">NP_001028198</a> <a href="#">Entrez Gene 91304 Human</a> <a href="#">Q4ZIN3</a>
Background:	The human gene C19orf6 localizes to chromosome 19p13.3. Splice variant membralin-1 is encoded by 11 exons, translating into 620 amino acids. Membralin is a novel tumor-associated marker in ovarian serous carcinomas.
Synonyms:	ASBABP1; C19orf6; MBRL; MEMBRALIN; R32184_3
Note:	Immunogen Sequence Homology: Pig: 100%; Human: 100%; Guinea pig: 100%; Dog: 92%; Rat: 85%; Mouse: 85%



[View online »](#)

Protein Families: Transmembrane

### Product images:



WB Suggested Anti-C19orf6 Antibody Titration:  
0.2-1 ug/ml; ELISA Titer: 1:12500; Positive Control:  
HepG2 cell lysate