

Product datasheet for **TA344542**

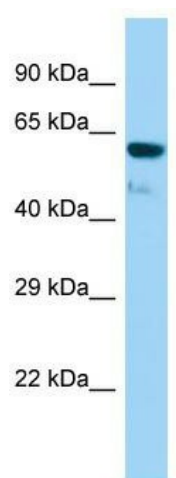
GTF3C5 Rabbit Polyclonal Antibody

Product data:

Product Type:	Primary Antibodies
Applications:	WB
Recommended Dilution:	WB
Reactivity:	Rat
Host:	Rabbit
Isotype:	IgG
Clonality:	Polyclonal
Immunogen:	The immunogen for Anti-Gtf3c5 antibody is: synthetic peptide directed towards the middle region of Rat Gtf3c5. Synthetic peptide located within the following region: IRFGYDPRKHPDAKIYQVLDLRIRCGMKYGYGSRDMPVKAKRSTYNYSLP
Formulation:	Liquid. Purified antibody supplied in 1x PBS buffer with 0.09% (w/v) sodium azide and 2% sucrose. <i>Note that this product is shipped as lyophilized powder to China customers.</i>
Purification:	Affinity Purified
Conjugation:	Unconjugated
Storage:	Store at -20°C as received.
Stability:	Stable for 12 months from date of receipt.
Predicted Protein Size:	56 kDa
Gene Name:	general transcription factor IIIC subunit 5
Database Link:	NP_001116295 Entrez Gene 362095 Rat Q9Y5Q8
Background:	The function of this protein remains unknown.
Synonyms:	TFIIC2-63; TFIIC63; TFIICepsilon
Note:	Immunogen Sequence Homology: Human: 100%; Rat: 93%; Mouse: 93%; Dog: 86%; Pig: 86%; Bovine: 86%; Rabbit: 86%; Zebrafish: 86%; Guinea pig: 86%; Yeast: 82%; Horse: 77%
Protein Families:	Transcription Factors



[View online »](#)

Product images:

Host: Rabbit; Target Name: Gtf3c5; Sample
Tissue: Rat Stomach lysates; Antibody Dilution:
1.0 ug/ml