

## Product datasheet for TA344540

### ONECUT2 Rabbit Polyclonal Antibody

#### Product data:

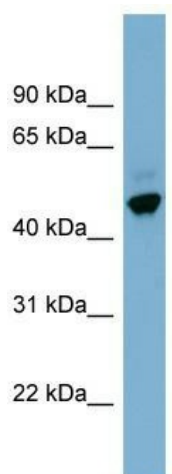
|                         |   |
|-------------------------|---|
| Product Type:           | Primary Antibodies  |
| Applications:           | WB  |
| Recommended Dilution:   | WB  |
| Reactivity:             | Human   |
| Host:                   | Rabbit  |
| Isotype:                | IgG   |
| Clonality:              | Polyclonal  |
| Immunogen:              | The immunogen for anti-ONECUT2 antibody: synthetic peptide directed towards the middle region of human ONECUT2. Synthetic peptide located within the following region:<br>LQEPEFQRMSALRLAACKRKEQEPNKDRNNSQKKSRLVFTDLQRRTLFAI                                    |
| Formulation:            | Liquid. Purified antibody supplied in 1x PBS buffer with 0.09% (w/v) sodium azide and 2% sucrose.<br><i>Note that this product is shipped as lyophilized powder to China customers.</i>   |
| Purification:           | Affinity Purified   |
| Conjugation:            | Unconjugated  |
| Storage:                | Store at -20°C as received.   |
| Stability:              | Stable for 12 months from date of receipt.  |
| Predicted Protein Size: | 54 kDa  |
| Gene Name:              | one cut homeobox 2  |
| Database Link:          | <a href="#">NP_004843</a><br><a href="#">Entrez Gene 9480 Human O95948</a>  |
| Background:             | ONECUT2 is a member of the transcription factors of the ONECUT class, whose prototype is hepatocyte nuclear factor (HNF)-6. The distribution of OC-2 mRNA in humans is tissue-restricted, the strongest expression being detected in the liver and skin. ONECUT |
| Synonyms:               | OC-2; OC2   |
| Note:                   | Immunogen Sequence Homology: Dog: 100%; Pig: 100%; Rat: 100%; Horse: 100%; Human: 100%; Mouse: 100%; Bovine: 100%; Rabbit: 100%; Guinea pig: 100%; Zebrafish: 79%   |



[View online »](#)

Protein Families: Transcription Factors

### Product images:



WB Suggested Anti-ONECUT2 Antibody Titration: 0.2-1 ug/ml; ELISA Titer: 1:312500; Positive Control: NCI-H226 cell lysate ONECUT2 is supported by BioGPS gene expression data to be expressed in NCIH226