

## Product datasheet for **TA344537**

### PREB Rabbit Polyclonal Antibody

#### Product data:

Product Type:	Primary Antibodies
Applications:	WB
Recommended Dilution:	WB
Reactivity:	Mouse
Host:	Rabbit
Isotype:	IgG
Clonality:	Polyclonal
Immunogen:	The immunogen for Anti-Preb antibody is synthetic peptide directed towards the N-terminal region of Mouse Preb. Synthetic peptide located within the following region: RRRGVELYRAPFPLYALRIDPKTGLLIAAGGGGAAKTGKNGVHFLQLEL
Formulation:	Liquid. Purified antibody supplied in 1x PBS buffer with 0.09% (w/v) sodium azide and 2% sucrose. <i>Note that this product is shipped as lyophilized powder to China customers.</i>
Purification:	Affinity Purified
Conjugation:	Unconjugated
Storage:	Store at -20°C as received.
Stability:	Stable for 12 months from date of receipt.
Predicted Protein Size:	45 kDa
Gene Name:	prolactin regulatory element binding
Database Link:	<a href="#">NP_037520</a> <a href="#">Entrez Gene 50907 Mouse</a> <a href="#">Q9HCU5</a>
Background:	Preb was first identified based on its probable role in the regulation of pituitary gene transcription. It binds to the prolactin gene (PRL) promoter and seems to activate transcription. Guanine nucleotide exchange factor that activates SARA2. It is also required for the formation of COPII transport vesicles from the ER.
Synonyms:	SEC12

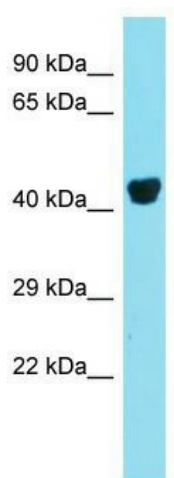


[View online »](#)

**Note:** Immunogen Sequence Homology: Dog: 100%; Pig: 100%; Rat: 100%; Horse: 100%; Human: 100%; Mouse: 100%; Bovine: 100%; Rabbit: 100%; Zebrafish: 86%; Guinea pig: 86%

**Protein Families:** Transcription Factors, Transmembrane

**Product images:**



Host: Rabbit; Target Name: Preb; Sample Tissue: Mouse Liver lysates; Antibody Dilution: 1.0 ug/ml