

## Product datasheet for **TA344536**

### SNAPC5 Rabbit Polyclonal Antibody

#### Product data:

Product Type:	Primary Antibodies
Applications:	WB
Recommended Dilution:	WB
Reactivity:	Human
Host:	Rabbit
Isotype:	IgG
Clonality:	Polyclonal
Immunogen:	The immunogen for anti-SNAPC5 antibody: synthetic peptide directed towards the N terminal of human SNAPC5. Synthetic peptide located within the following region: KEEETLLRLKAALHDQLNRLKVEELALQSMISSRRGDEMLSSHTVPEQSH
Formulation:	Liquid. Purified antibody supplied in 1x PBS buffer with 0.09% (w/v) sodium azide and 2% sucrose. <i>Note that this product is shipped as lyophilized powder to China customers.</i>
Purification:	Affinity Purified
Conjugation:	Unconjugated
Storage:	Store at -20°C as received.
Stability:	Stable for 12 months from date of receipt.
Predicted Protein Size:	11 kDa
Gene Name:	small nuclear RNA activating complex polypeptide 5
Database Link:	<a href="#">NP_006040</a> <a href="#">Entrez Gene 10302 Human</a> <a href="#">O75971</a>
Background:	SNAPC5 is the part of the SNAPc complex required for the transcription of both RNA polymerase II and III small-nuclear RNA genes. SNAPC5 binds to the proximal sequence element (PSE), a non-TATA-box basal promoter element common to these 2 types of genes. Recruits TBP and BRF2 to the U6 snRNA TATA box.
Synonyms:	SNAP19

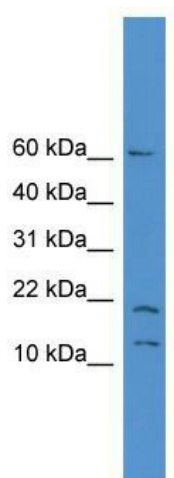


[View online »](#)

**Note:** Immunogen Sequence Homology: Dog: 100%; Pig: 100%; Rat: 100%; Human: 100%; Mouse: 100%; Bovine: 100%; Rabbit: 100%; Guinea pig: 100%

**Protein Families:** Transcription Factors

**Product images:**



WB Suggested Anti-SNAPC5 Antibody Titration:  
0.2-1 ug/ml; ELISA Titer: 1:312500; Positive  
Control: THP-1 cell lysate