

## Product datasheet for **TA344535**

### ARIH2 Rabbit Polyclonal Antibody

#### Product data:

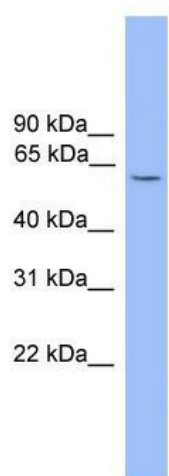
Product Type:	Primary Antibodies
Applications:	WB
Recommended Dilution:	WB
Reactivity:	Human
Host:	Rabbit
Isotype:	IgG
Clonality:	Polyclonal
Immunogen:	The immunogen for anti-ARIH2 antibody: synthetic peptide directed towards the N terminal of human ARIH2. Synthetic peptide located within the following region: MSVDMNSQGSDSNEEDYDPNCEEEEEEEEDDPGDIEDYYVGVASDVEQQG
Formulation:	Liquid. Purified antibody supplied in 1x PBS buffer with 0.09% (w/v) sodium azide and 2% sucrose. <i>Note that this product is shipped as lyophilized powder to China customers.</i>
Purification:	Affinity Purified
Conjugation:	Unconjugated
Storage:	Store at -20°C as received.
Stability:	Stable for 12 months from date of receipt.
Predicted Protein Size:	58 kDa
Gene Name:	ariadne RBR E3 ubiquitin protein ligase 2
Database Link:	<a href="#">NP_006312</a> <a href="#">Entrez Gene 10425 Human</a> <a href="#">O95376</a>
Background:	ARIH2 is the E3 ubiquitin-protein ligase mediating 'Lys-48'-and 'Lys-63'-linked polyubiquitination and subsequent proteasomal degradation of modified proteins. 'ARIH2 may play a role in myelopoiesis.
Synonyms:	ARI2; TRIAD1
Note:	Immunogen Sequence Homology: Dog: 100%; Pig: 100%; Rat: 100%; Horse: 100%; Human: 100%; Mouse: 100%; Bovine: 100%; Rabbit: 100%; Guinea pig: 100%



[View online »](#)

Protein Families: Druggable Genome

### Product images:



WB Suggested Anti-ARIH2 Antibody Titration: 0.2-1 ug/ml; ELISA Titer: 1:312500; Positive Control: Human heart