

## Product datasheet for **TA344527**

### TRIM31 Rabbit Polyclonal Antibody

#### Product data:

Product Type:	Primary Antibodies
Applications:	WB
Recommended Dilution:	WB
Reactivity:	Human
Host:	Rabbit
Isotype:	IgG
Clonality:	Polyclonal
Immunogen:	The immunogen for anti-TRIM31 antibody: synthetic peptide directed towards the middle region of human TRIM31. Synthetic peptide located within the following region: GSLKKFKDQLQADRKKDENRFFKSMNKNDMKSWGLLQKNNHKMNKTSEPG
Formulation:	Liquid. Purified antibody supplied in 1x PBS buffer with 0.09% (w/v) sodium azide and 2% sucrose. <i>Note that this product is shipped as lyophilized powder to China customers.</i>
Purification:	Affinity Purified
Conjugation:	Unconjugated
Storage:	Store at -20°C as received.
Stability:	Stable for 12 months from date of receipt.
Predicted Protein Size:	48 kDa
Gene Name:	tripartite motif containing 31
Database Link:	<a href="#">NP_008959</a> <a href="#">Entrez Gene 11074 Human</a> <a href="#">Q9BZY9</a>
Background:	TRIM31 encodes for a member of the tripartite motif (TRIM) family. The TRIM motif includes three zinc-binding domains, a RING, a B-box type 1 and a B-box type 2, and a coiled-coil region. The protein localizes to both the cytoplasm and the nucleus. The protein encoded by this gene is a member of the tripartite motif (TRIM) family. The TRIM motif includes three zinc-binding domains, a RING, a B-box type 1 and a B-box type 2, and a coiled-coil region. The protein localizes to both the cytoplasm and the nucleus. Its function has not been identified.

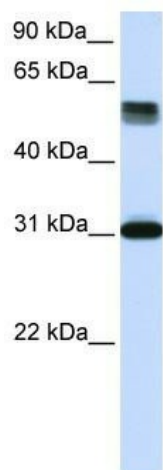


[View online »](#)

**Synonyms:** C6orf13; HCG1; HCGI; RNF

**Note:** Immunogen Sequence Homology: Human: 100%; Rabbit: 91%

**Product images:**



WB Suggested Anti-TRIM31 Antibody Titration:  
0.2-1 ug/ml; ELISA Titer: 1:62500; Positive Control:  
Human Lung