

Product datasheet for **TA344524**

KLF8 Rabbit Polyclonal Antibody

Product data:

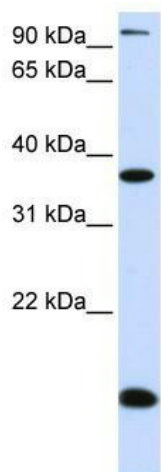
Product Type:	Primary Antibodies
Applications:	WB
Recommended Dilution:	WB
Reactivity:	Human
Host:	Rabbit
Isotype:	IgG
Clonality:	Polyclonal
Immunogen:	The immunogen for anti-KLF8 antibody: synthetic peptide directed towards the N terminal of human KLF8. Synthetic peptide located within the following region: LLASDFSLPQVEPVDLSFHKPKAPLQPASMLQAPIRPPKPQSSPQTLVVS
Formulation:	Liquid. Purified antibody supplied in 1x PBS buffer with 0.09% (w/v) sodium azide and 2% sucrose. <i>Note that this product is shipped as lyophilized powder to China customers.</i>
Purification:	Affinity Purified
Conjugation:	Unconjugated
Storage:	Store at -20°C as received.
Stability:	Stable for 12 months from date of receipt.
Predicted Protein Size:	39 kDa
Gene Name:	Kruppel-like factor 8
Database Link:	NP_009181 Entrez Gene 11279 Human O95600
Background:	KLF8 is abnormally expressed in female patients with X autosome translocation t(X;21) (p11.2;q22.3) and non-syndromic mental retardation.
Synonyms:	BKLF3; ZNF741
Note:	Immunogen Sequence Homology: Human: 100%; Rabbit: 93%; Pig: 90%; Rat: 86%; Guinea pig: 86%; Mouse: 79%



[View online »](#)

Protein Families: Transcription Factors

Product images:



WB Suggested Anti-KLF8 Antibody Titration: 0.2-1 ug/ml; ELISA Titer: 1:312500; Positive Control: Human Placenta