

Product datasheet for TA344520

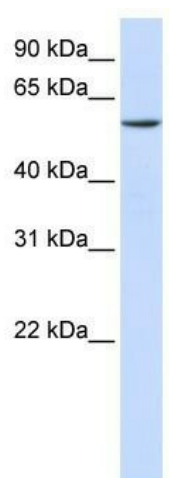
ZNF358 Rabbit Polyclonal Antibody

Product data:

Product Type:	Primary Antibodies
Applications:	WB
Recommended Dilution:	WB
Reactivity:	Human
Host:	Rabbit
Isotype:	IgG
Clonality:	Polyclonal
Immunogen:	The immunogen for anti-ZNF358 antibody: synthetic peptide directed towards the C terminal of human ZNF358. Synthetic peptide located within the following region: LVPSPLDLPVPSDPDPVPSDPNPVSCPDPSPTRGTVSPALPTGESPE
Formulation:	Liquid. Purified antibody supplied in 1x PBS buffer with 0.09% (w/v) sodium azide and 2% sucrose.
Purification:	Affinity Purified
Conjugation:	Unconjugated
Storage:	Store at -20°C as received.
Stability:	Stable for 12 months from date of receipt.
Predicted Protein Size:	59 kDa
Gene Name:	zinc finger protein 358
Database Link:	NP_060553 Entrez Gene 140467 Human Q9NW07
Background:	ZNF358 belongs to the krueppel C2H2-type zinc-finger protein family and may be involved in transcriptional regulation.
Synonyms:	ZFEND
Note:	Immunogen Sequence Homology: Human: 100%; Bovine: 86%



[View online »](#)

Product images:

WB Suggested Anti-ZNF358 Antibody Titration:
0.2-1 ug/ml; ELISA Titer: 1:1562500; Positive
Control: Human Lung