

## Product datasheet for TA344519

### D Box Binding Protein (DBP) Rabbit Polyclonal Antibody

#### Product data:

Product Type:	Primary Antibodies
Applications:	WB
Recommended Dilution:	WB
Reactivity:	Human
Host:	Rabbit
Isotype:	IgG
Clonality:	Polyclonal
Immunogen:	The immunogen for anti-DBP antibody: synthetic peptide directed towards the C terminal of human DBP. Synthetic peptide located within the following region: FSEELKQPIMKKARKIQVPEEQKDEKYWSRRYKNNEAAKRSRDARRLK
Formulation:	Liquid. Purified antibody supplied in 1x PBS buffer with 0.09% (w/v) sodium azide and 2% sucrose. <i>Note that this product is shipped as lyophilized powder to China customers.</i>
Purification:	Affinity Purified
Conjugation:	Unconjugated
Storage:	Store at -20°C as received.
Stability:	Stable for 12 months from date of receipt.
Predicted Protein Size:	34 kDa
Gene Name:	D-box binding PAR bZIP transcription factor
Database Link:	<a href="#">NP_001343</a> <a href="#">Entrez Gene 1628 Human</a> <a href="#">Q10586</a>
Background:	DBP is a member of the PAR bZIP (proline and acidic amino acid-rich basic leucine zipper) transcription factor family. It is transcriptional activator that recognizes and binds to the sequence 5'-RTTAYGTAAY-3' found in the promoter of genes such as albumin, CYP2A4 and CYP2A5. The protein is not essential for circadian rhythm generation, but modulates important clock output genes.
Synonyms:	DABP

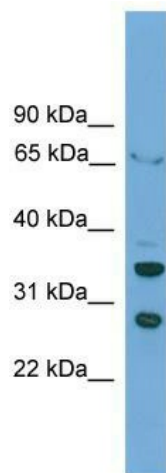


[View online »](#)

**Note:** Immunogen Sequence Homology: Dog: 100%; Pig: 100%; Rat: 100%; Horse: 100%; Human: 100%; Sheep: 100%; Bovine: 100%; Guinea pig: 100%; Mouse: 93%; Rabbit: 90%; Zebrafish: 80%

**Protein Families:** Transcription Factors

**Product images:**



WB Suggested Anti-DBP Antibody Titration: 0.2-1 ug/ml; ELISA Titer: 1:312500; Positive Control: HepG2 cell lysate