

Product datasheet for **TA344518**

D Box Binding Protein (DBP) Rabbit Polyclonal Antibody

Product data:

Product Type:	Primary Antibodies
Applications:	WB
Recommended Dilution:	WB
Reactivity:	Human
Host:	Rabbit
Isotype:	IgG
Clonality:	Polyclonal
Immunogen:	The immunogen for anti-DBP antibody: synthetic peptide directed towards the middle region of human DBP. Synthetic peptide located within the following region: VRRASGCLITLDQHNGKKSQAVESANTAHNGKVNGLCFTSDGLHLLTVGT
Formulation:	Liquid. Purified antibody supplied in 1x PBS buffer with 0.09% (w/v) sodium azide and 2% sucrose. <i>Note that this product is shipped as lyophilized powder to China customers.</i>
Purification:	Affinity Purified
Conjugation:	Unconjugated
Storage:	Store at -20°C as received.
Stability:	Stable for 12 months from date of receipt.
Predicted Protein Size:	34 kDa
Gene Name:	D-box binding PAR bZIP transcription factor
Database Link:	NP_001343 Entrez Gene 1628 Human Q10586



[View online »](#)

Background:

DBP is a member of the PAR bZIP (proline and acidic amino acid-rich basic leucine zipper) transcription factor family. It is transcriptional activator that recognizes and binds to the sequence 5'-RTTAYGTAAAY-3' found in the promoter of genes such as albumin, CYP2A4 and CYP2A5. The protein is not essential for circadian rhythm generation, but modulates important clock output genes. DBP is a member of the PAR bZIP (proline and acidic amino acid-rich basic leucine zipper) transcription factor family (Khatib et al., 1994 [PubMed 7835883]). [supplied by OMIM]. Publication Note: This RefSeq record includes a subset of the publications that are available for this gene. Please see the Entrez Gene record to access additional publications. PRIMARYREFSEQ_SPAN PRIMARY_IDENTIFIER PRIMARY_SPAN COMP 1-51 DT217864.1 56-106 52-1518 BC011965.1 1-1467 1519-1658 CA425431.1 1-140 c

Synonyms:

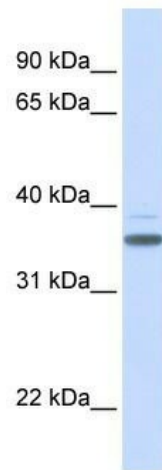
DABP

Note:

Immunogen Sequence Homology: Dog: 100%; Pig: 100%; Horse: 100%; Human: 100%; Sheep: 100%; Bovine: 100%; Rat: 93%; Mouse: 93%; Guinea pig: 93%

Protein Families:

Transcription Factors

Product images:

WB Suggested Anti-DBP Antibody Titration: 0.2-1 ug/ml; ELISA Titer: 1:62500; Positive Control: Human heart